



# Jak zajistit spolehlivou a bezpečnou komunikaci v multcloudovém prostředí?

Miroslav Brzek

Technical Solutions Architect

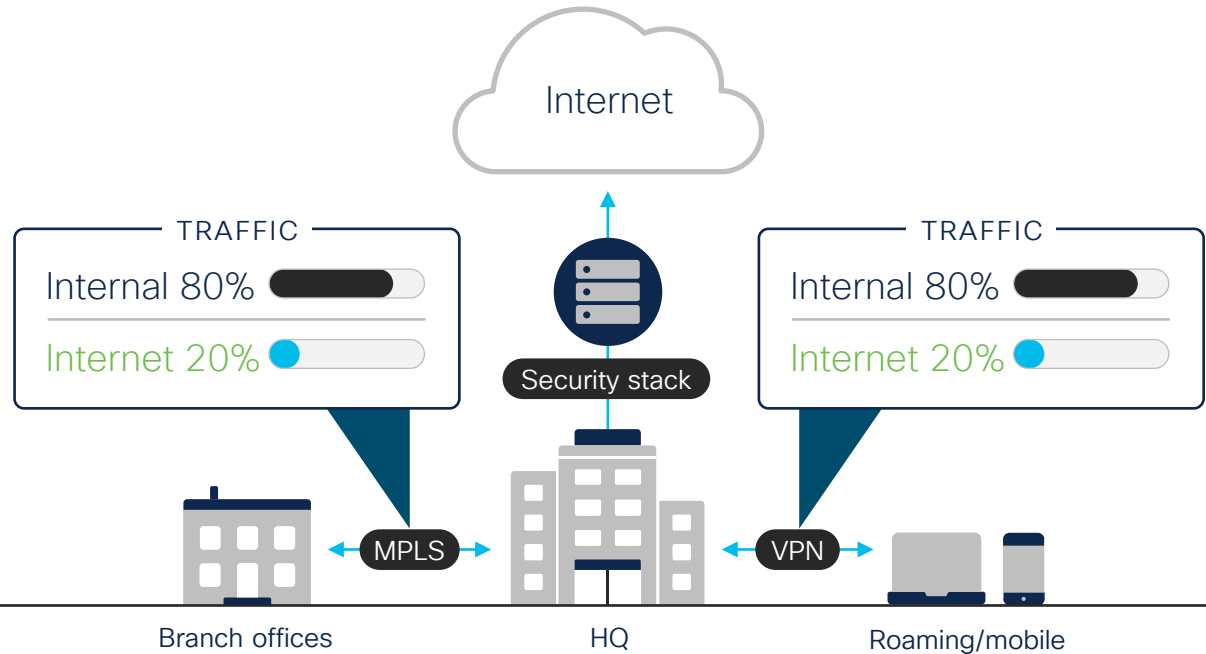
# Agenda

- 1 Today's Security & Networking Trends
- 2 Cisco SASE: SD-WAN and Umbrella SIG Integration
- 3 Catalyst 8000 Edge Platforms Family
- 4 Conclusion

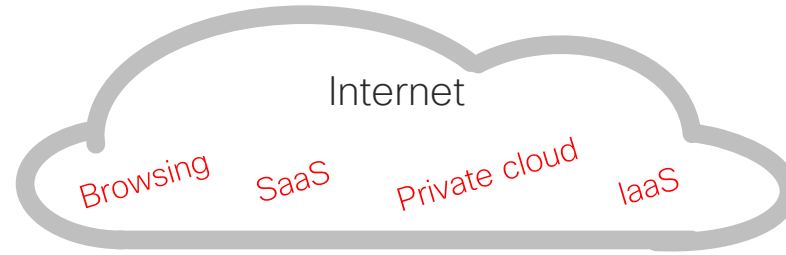
# Connecting Users to Data Center was the priority of Traditional WAN

**Network:**  
Centralized

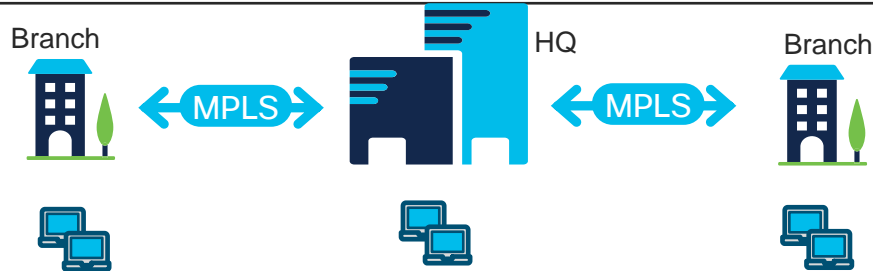
**Security:**  
Single, on-premise  
security stack



# Disruption #1 – Cloud App Proliferation

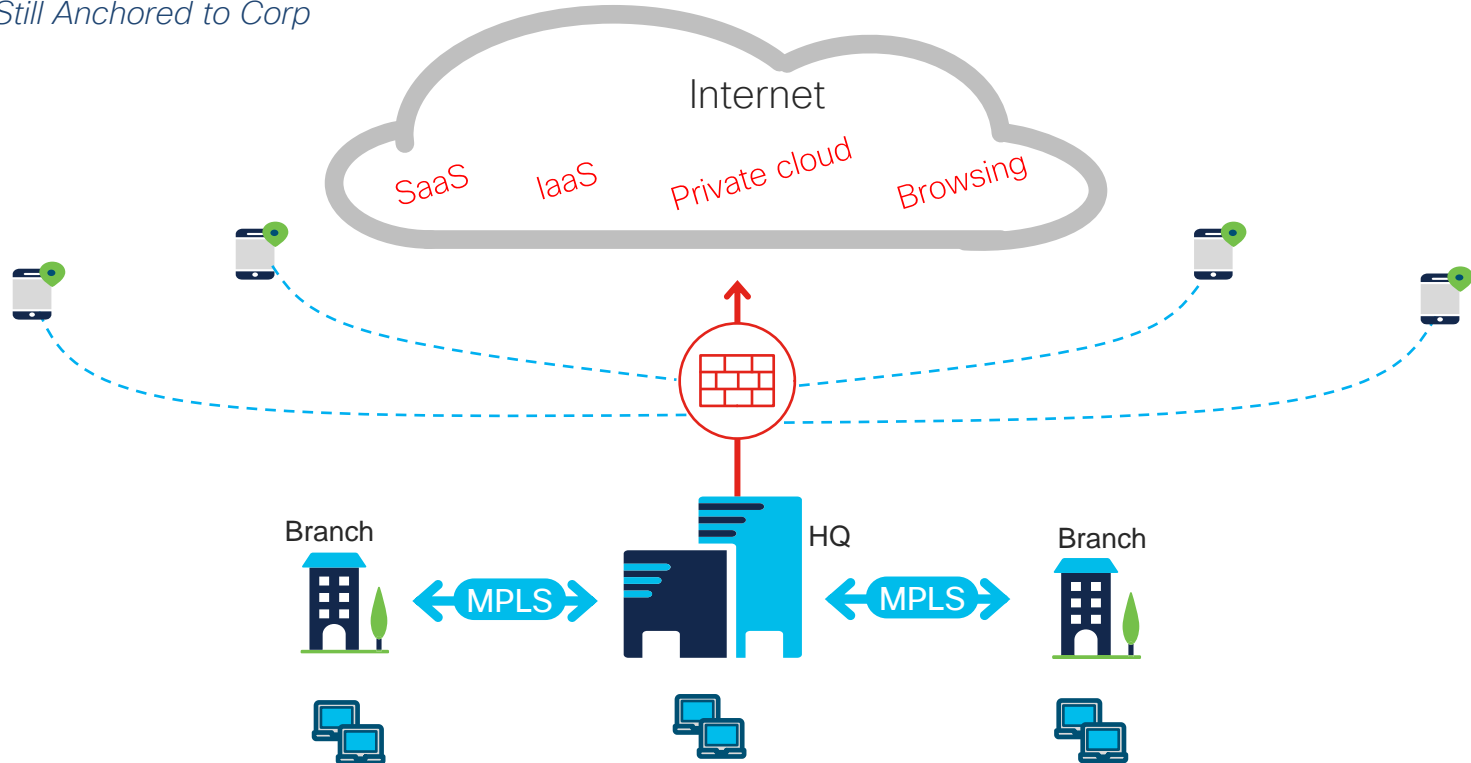


**Bottleneck**



# Disruption #2 – User Mobility

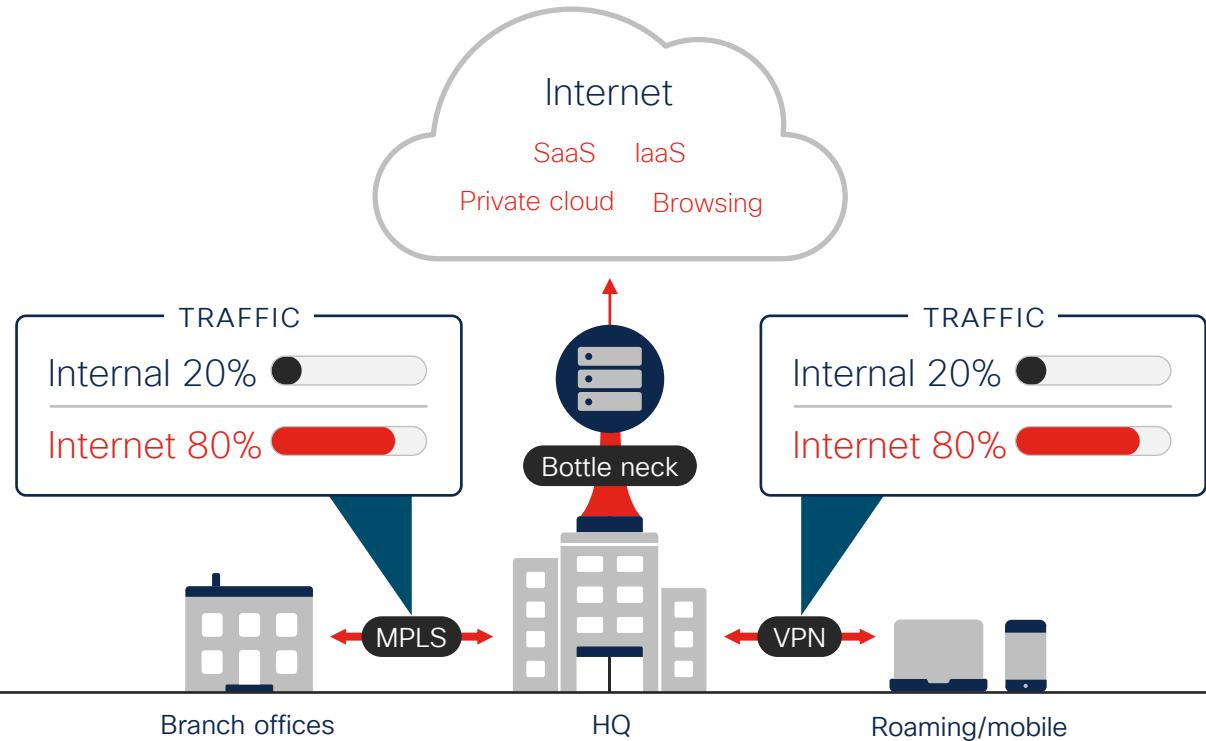
*Problem = Still Anchored to Corp*



# Changes in the types of traffic and destinations Have inverted the traffic model

## Problems:

- Costs
- Performance
- # Tools/vendors
- Integrations
- Maintenance



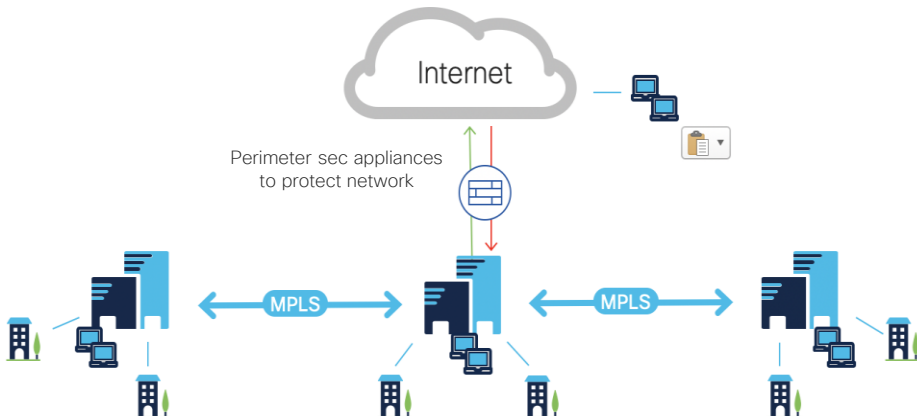
# WAN Network Transformation

## Internet/Cloud is New “Center of Universe”

Gartner

“The legacy “data center as the center of the universe” network and network security architecture is *obsolete* and has become an inhibitor to the needs of digital business”.

### DC-Centric



### Internet/Cloud-Centric



# Network architecture is changing

**50%**

of today's workforce is remote

**60%**

of orgs' have a majority of apps as SaaS



**79%**

of orgs shifting to some or all direct internet access



SD-WAN

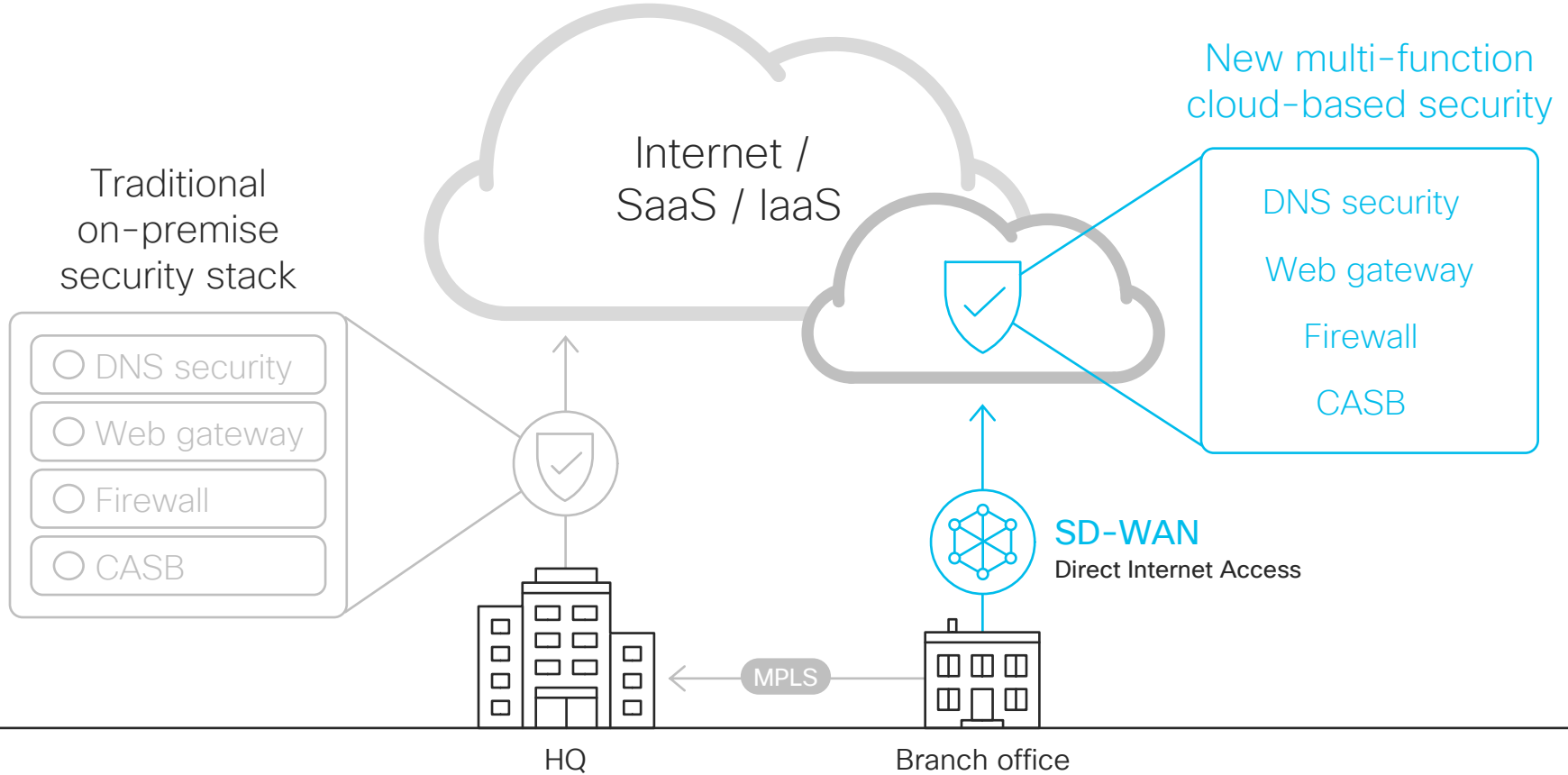
For remote locations with direct internet access, SD-WAN brings predictable application experience, centralized management, maximum choice and control while cloud security ensures the right security at the right place.



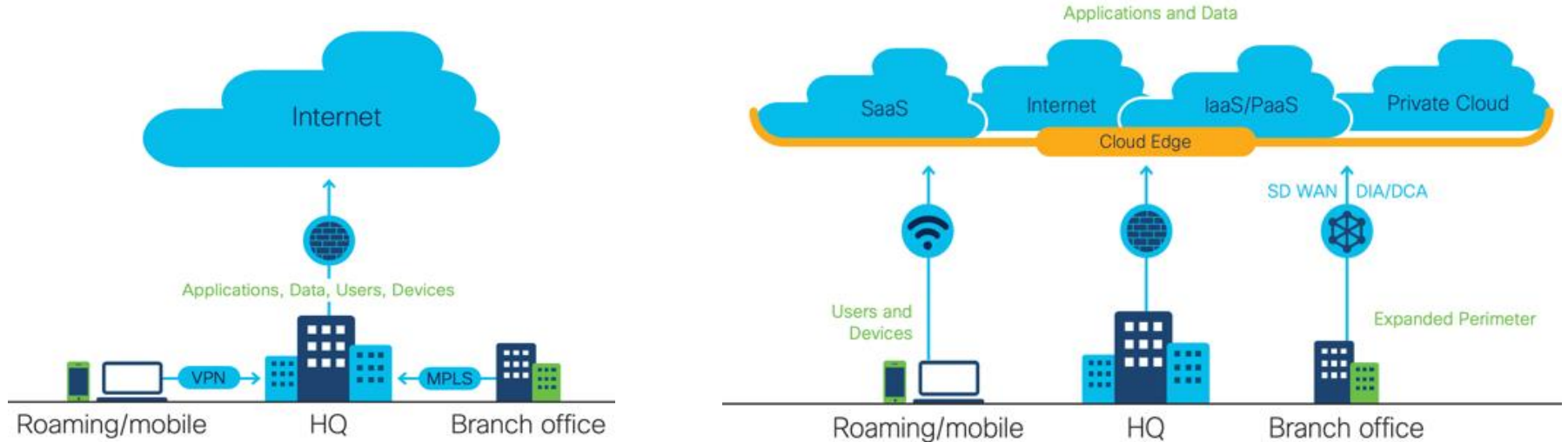
Cloud Security



# Cloud-driven security changes



# Cloud Driving Major Network Architecture Shift



## Legacy

Hub & Spoke Architecture with on-prem appliances



## Today & Future

Convergence of networking and security services -> SASE

# We need to reduce complexity and improve performance by **converging** connectivity, security, and identity functions

Different analysts have different names for this multi-function approach...

---

**Gartner**

Secure Access Service Edge (SASE)  
Secure Internet Gateway (SIG)

---

**FORRESTER**

Zero Trust Edge

---

**ESG**

Elastic Cloud Gateway

---

...but full agreement on the move to cloud-native aggregation

“SASE services will converge a number of disparate network and network security services including SD-WAN, DNS protection, secure web gateway, CASB, software defined perimeter (zero trust network access), and firewall as a service.”

**Gartner**

SASE Hype Cycle for Enterprise Networking, Andrew Lerner, 2019

# Cisco SASE – Connect, Control, Converge

## 1 Connect

Simple, automated transport from any user, any device, to any application

## 2 Control

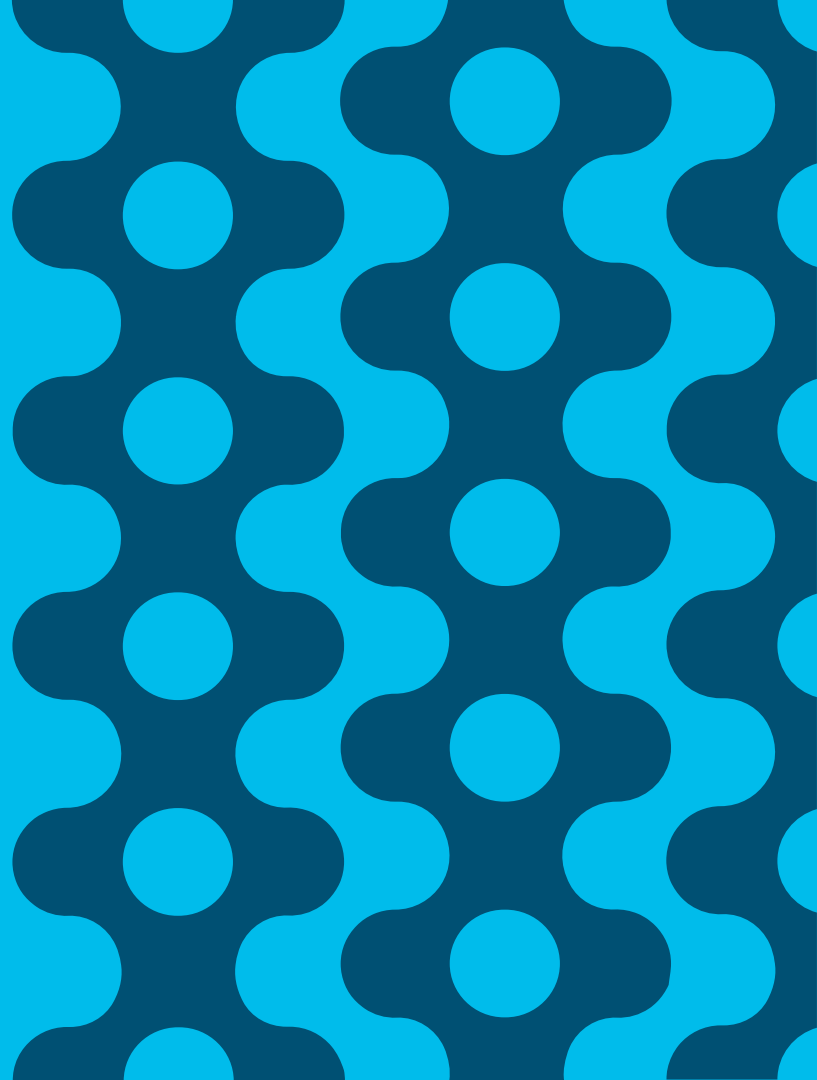
Leading threat protection and zero trust access control

## 3 Converge

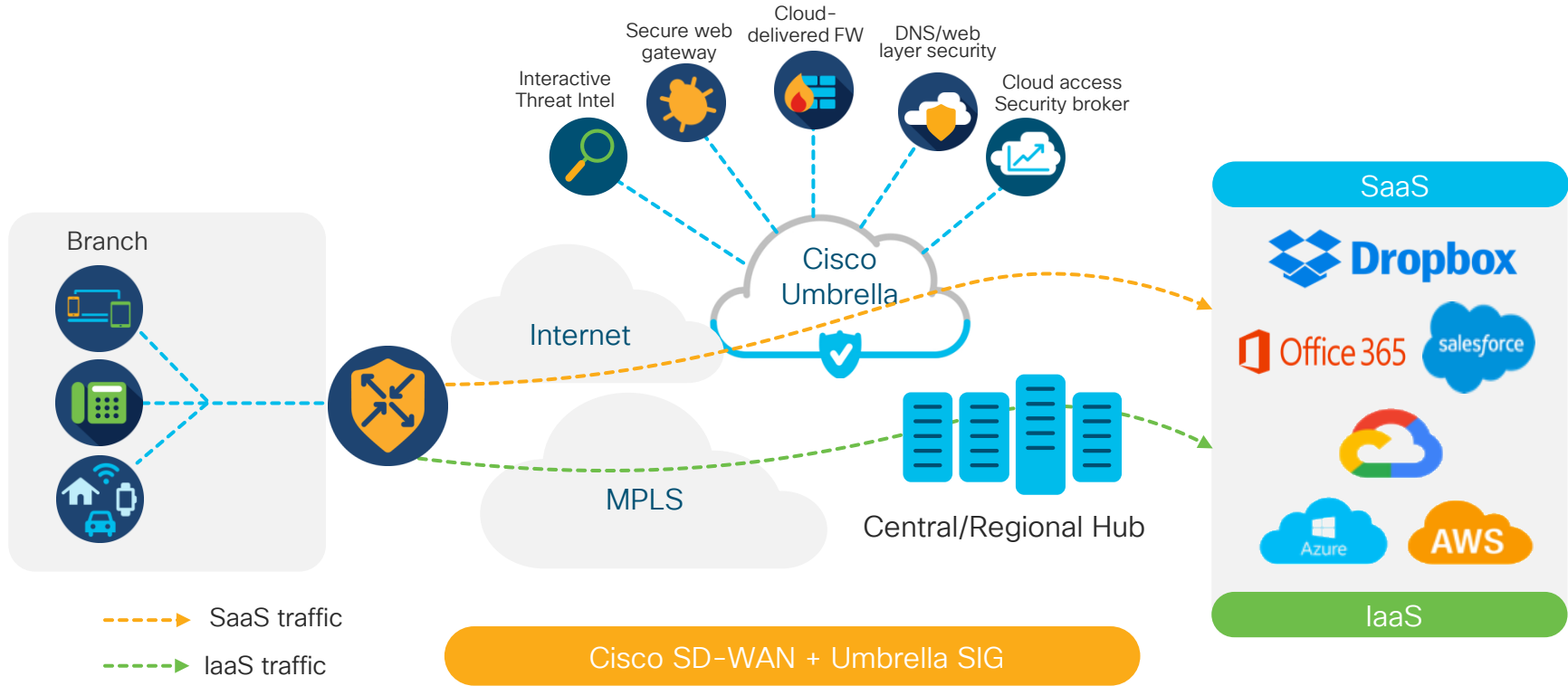
Integrated networking and security with automated provisioning



Securing your network  
with Cisco SD-WAN  
and Umbrella SIG

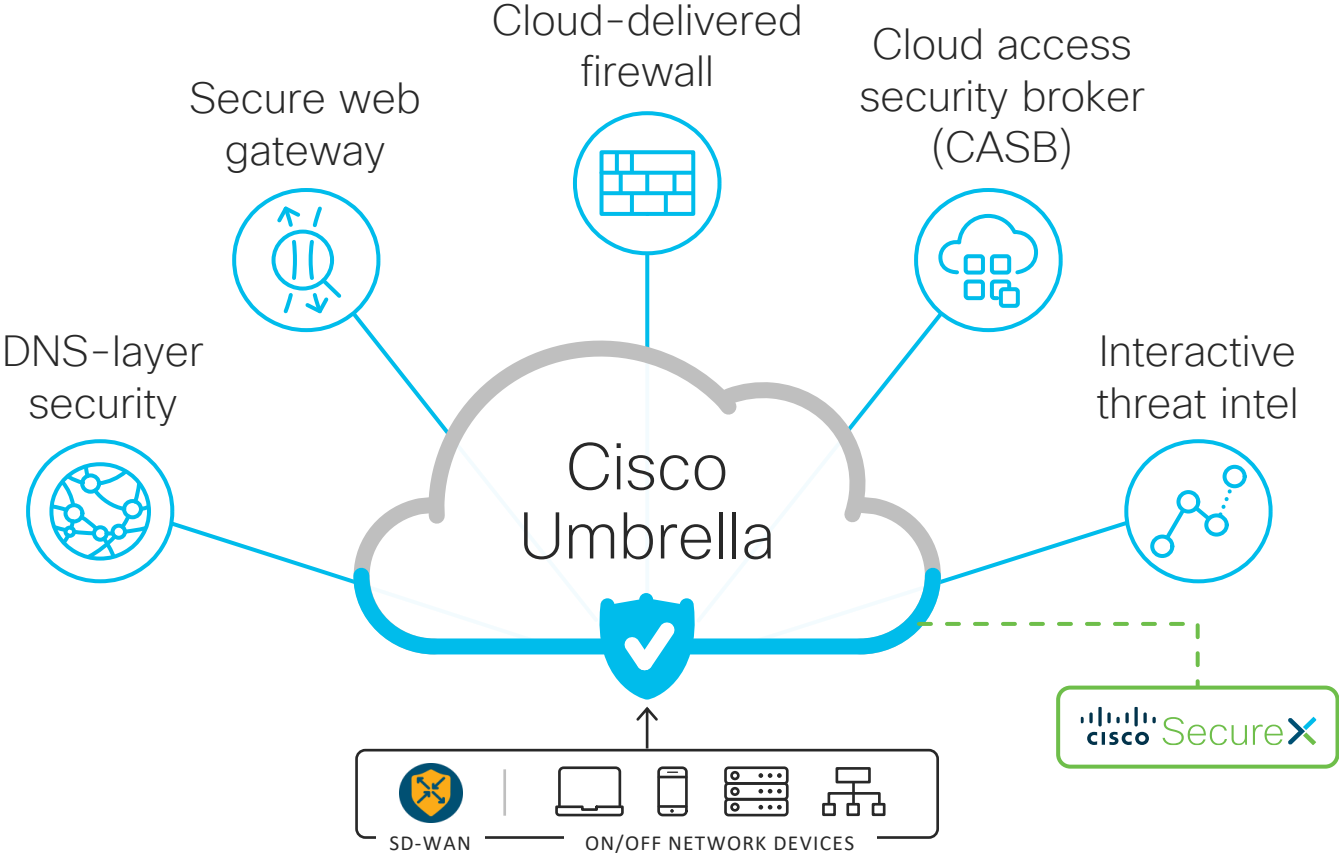


# SASE Cloud Adoption with Cisco SD-WAN and Umbrella SIG



Seamless and secure access for cloud applications

# Cisco Umbrella Multi-Function, Cloud Security Solution



# Cisco Umbrella: key capabilities

## Secure onramp to the internet, everywhere



### Visibility

- All internet & web traffic
- All apps and all devices
- SSL decryption
- Other Cisco security and 3<sup>rd</sup> party data via SecureX



### Protection

- DNS-layer security
- Web inspection
- File inspection
- Sandboxing
- Interactive threat intelligence
- File type blocking



### Control

- URL block/allow lists
- Port and protocol rules
- Content filtering
- Granular app controls
- L7 firewall: Non-web app discovery and blocking

Powered by Cisco Talos threat intelligence



# Umbrella for Cisco SD-WAN

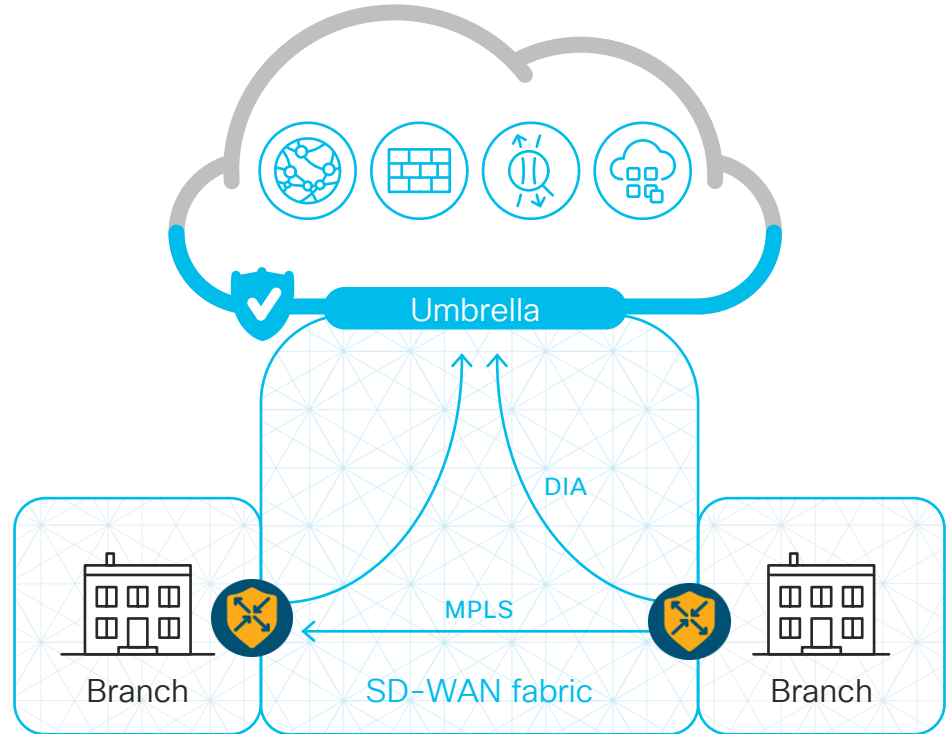
Fast forward time to value with automated security

**Hands-off automation:** deploy cloud security across thousands of branches in minutes

**Top notch protection:** defend against threats at the branch with the leader in security efficacy

**Simplified management:** single pane of glass across all offices and users

**Deeper inspection & controls:** SWG and cloud-delivered firewall with IPSec tunnels



# Simple on-boarding: accelerate security & value

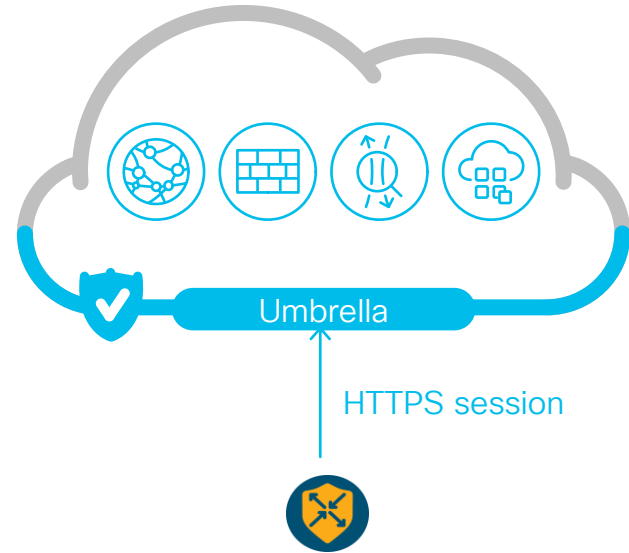
Umbrella for Cisco SD-WAN

Deploying Secure SD-WAN  
no longer takes months:

SD-WAN Edge devices are automatically  
registered to Umbrella

No need to manually enter API keys

Secure API key is automatically  
provisioned on the SD-WAN edge  
device  
(via an HTTPS session)



DNA Premier package

# Automated IPsec tunnel creation

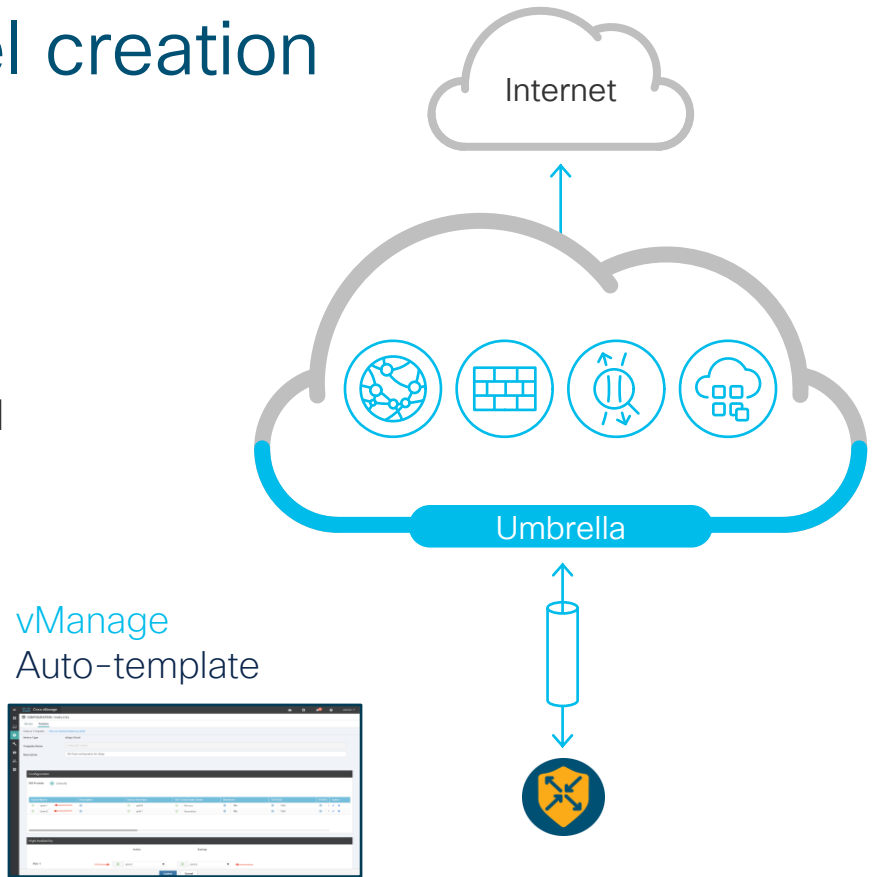
## Umbrella for Cisco SD-WAN

Distributed organizations with branch offices need to roll-out security fast

Without automation, customers need to manually establish a tunnel for each WAN edge device at the branch

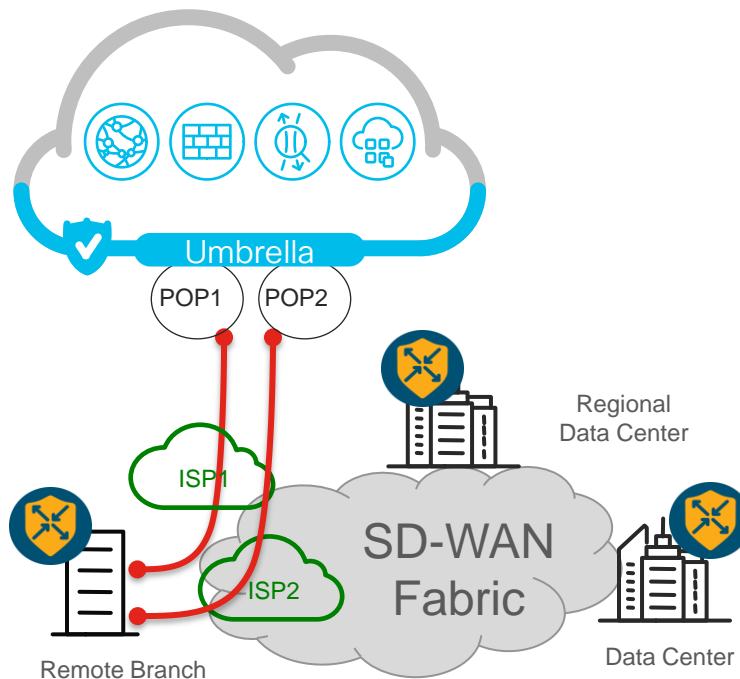
This integration enables customers to:

- Auto-setup with IPsec tunnel to Umbrella SIG using template
- Quickly deploy integrated security across thousands of branches



# Tunnel capabilities

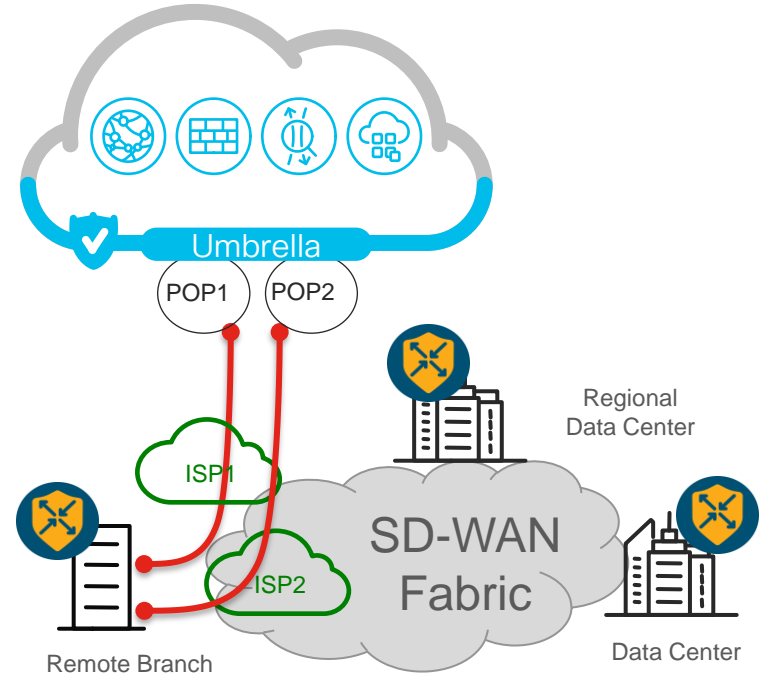
- vManage auto-templates allow up to active 4 IPSEC tunnels (250Mbps each) from a single SD-WAN edge router
- SD-WAN edge router ECMP load-balances traffic between IPsec tunnels
- Multiple tunnels can be established from a single public IP address (NAT-T)
- You can assign tunnel weights to influence the load-balancing mechanism or to prefer one tunnel over the others



# Policy based routing to Cisco Umbrella

## Use case

- Centralized Data Policy based” traffic steering to SIG tunnels, which provides more flexibility for a Customer to drive their business intent
- Offers customers flexibility to select which applications send traffic to Umbrella
- Customers can leverage existing data-policy constructs like app-list, prefix-list etc as criteria to steer such traffic/applications to a SIG
- Data policy can be selected per VPN



# Cisco SD-WAN and Umbrella Integration

Direct Peering – Optimized path from Secure Cloud Gateway to Cloud Workloads

## Use case

- As a network admin, I want the best possible application performance across my network

## Feature

- Direct peering lowers latency by providing more direct paths
- Global footprint with 20 Regional DCs, expanding to 32+
- Direct peering from Regional DCs to more than 1,000 organizations including leading SaaS and IaaS providers
- Up to 50% performance increase with key applications



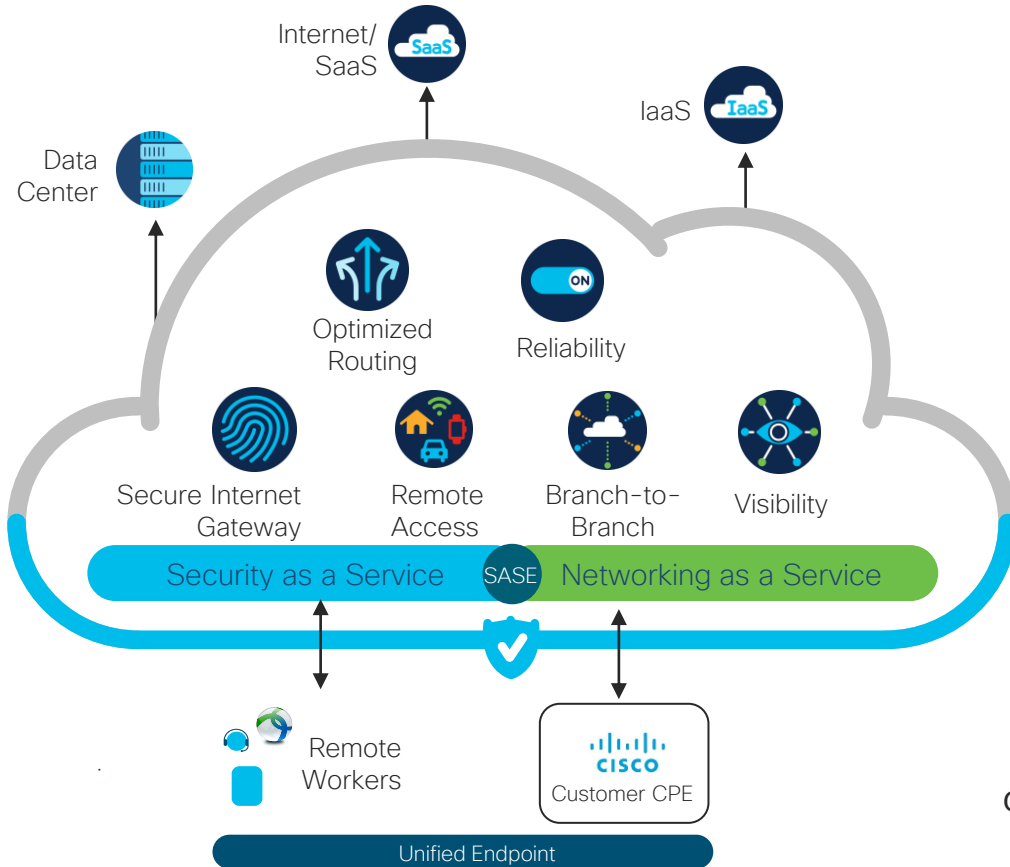
SPs	IaaS	SaaS
<ul style="list-style-type: none"><li>• AT&amp;T (Global)</li><li>• Bell</li><li>• Bharti Airtel Limited</li><li>• BT</li><li>• Charter</li><li>• China Mobile</li><li>• Google Fiber</li><li>• KDDI</li><li>• Rogers</li><li>• Swisscom</li><li>• Telkom</li><li>• Verizon</li><li>• Vodafone</li></ul>	<ul style="list-style-type: none"><li>• Alibaba</li><li>• Amazon</li><li>• Dell Services</li><li>• Digital Ocean</li><li>• Equinix</li><li>• Fastly</li><li>• Go Daddy</li><li>• Google</li><li>• Huawei Cloud</li><li>• Microsoft</li><li>• Rackspace</li></ul>	<ul style="list-style-type: none"><li>• Apple</li><li>• Baidu</li><li>• Box</li><li>• Microsoft MSN</li><li>• Netflix</li><li>• Salesforce</li><li>• Yahoo!</li><li>• Webex</li><li>• Blizzard</li><li>• Dropbox</li><li>• Facebook</li></ul>

# Current data centers as of January 2021

DNS	SWG	CDFW & IPsec tunnel termination
Miami, US	Miami, FL, US	
Milan, IT	Milan, IT	Milan, IT
Mumbai, IN	Mumbai, IN	
New York, US	New York, NY, US	New York, NY
Palo Alto, US		
Paris, FR	Paris, FR	Paris, FR
<b>Prague, CZ</b>	<b>Prague, CZ</b>	<b>Prague, CZ</b>
Rio de Janeiro, BR	Rio de Janeiro, BR	Rio de Janeiro, BR
	Santa Clara, CA, US	Santa Clara, CA
Sao Paulo, BR	Sao Paulo, BR	São Paulo, BR
Seattle, US		
Singapore, SG	Singapore, SG	Singapore, SG
Stockholm, SW	Stockholm, SW	
Sydney, AU	Sydney, AU	Sydney, AU
Tokyo, JP	Tokyo, JP	Tokyo, JP
Toronto, CA	Toronto, ON, CA	Toronto, CA
Vancouver, CA	Vancouver, BC, CA	Vancouver, CA
Warsaw, PL		

DNS	SWG	CDFW & IPsec tunnel termination
Amsterdam, NL	Amsterdam, NL	
Ashburn, US	Ashburn, VA, US	Ashburn, VA
Atlanta, US	Atlanta, US	
Bucharest, RO		
Chicago, US	Chicago, IL, US	
Copenhagen, DK		
Dallas, US	Dallas, TX, US	
Denver, US	Denver, US	
Dubai, AE		
Dublin, IE		
Frankfurt, DE	Frankfurt, DE	Frankfurt, DE
Hong Kong, CN	Hong Kong, CN	
Johannesburg, ZA	Johannesburg, ZA	
London, GB	London, UK	London, UK
Los Angeles, US	Los Angeles, CA, US	Los Angeles, CA, US
Melbourne, AU	Melbourne, AU	Melbourne, AU

# Cisco Vision for SDWAN and Umbrella integration



Easily onboard any “branch,” from a remote worker to a regional office



Consistent security across all traffic sources



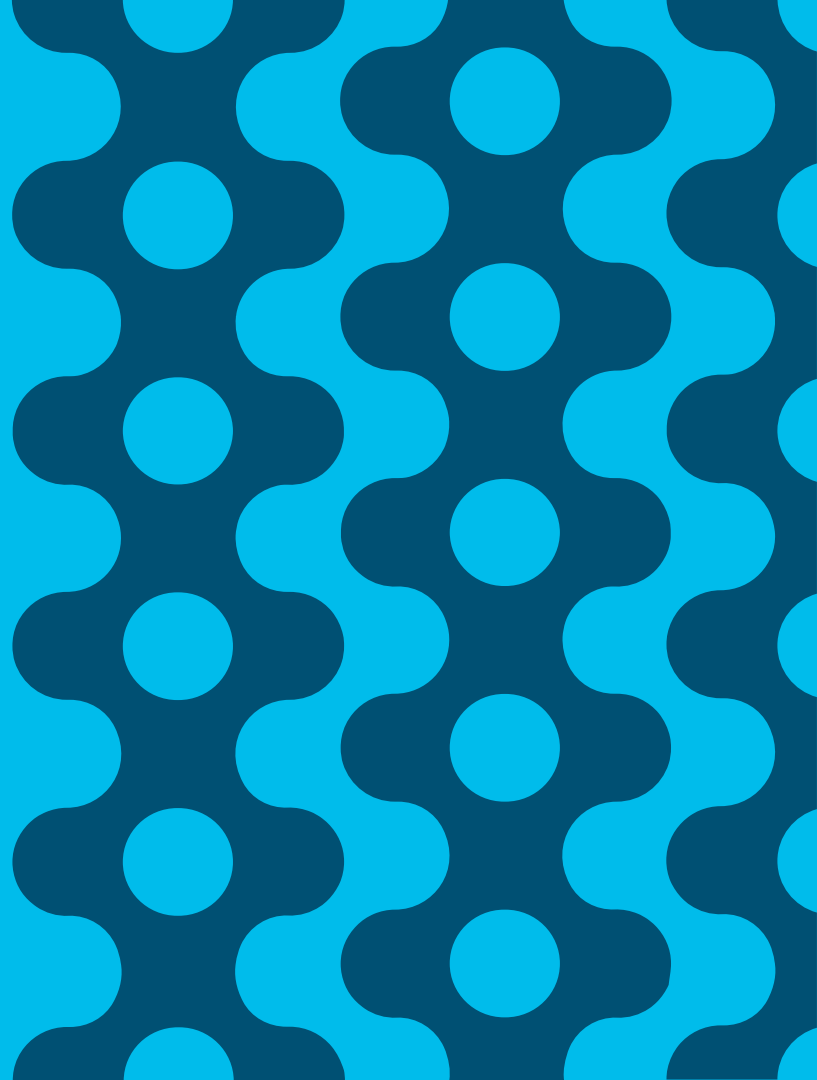
Access to applications wherever they reside



Create a strong and differentiated SASE offer to deliver unparalleled value to customers through a simple, seamless, and tight integration between SDWAN and Umbrella



# Catalyst 8000 Edge Platforms Family



# Introducing Catalyst 8000 Edge Platforms Family

Built for the cloud edge



Catalyst 8000v Edge Software/  
Catalyst 8200 Edge uCPE



Catalyst 8300/8200 Series Edge Platforms



Catalyst 8500 Series Edge Platforms



## Secure, connected experience

- SD-WAN ready
- Cloud-scale multi-layer security
- 256-bit WAN MACSec



## Cloud-native agility

- 2-5x throughput improvement
- 10G in access to 40G/100G in edge
- Integration with leading cloud providers



## Business-first resiliency

- Built-in edge compute resources
- End-to-end analytics and assurance

# Why Catalyst 8000?



## Cloud Native Agility

Higher Scale for Distributed Services

Integration with leading Cloud Providers

## SASE

Support for Cisco Umbrella's cloud security services

Integrated security and advanced segmentation to contain threats

## Connected Experiences

Enhanced Wireless capabilities for IoT Scale

Improved applications performance  
- User to Cloud

## Business First Resiliency

Resource elasticity for edge compute and virtualization

Built to produce massive and rich telemetry capabilities



- Next Generation QFP3.0
- Higher SD-WAN Performance
- Open and programmable IOS XE
- Future Proofed – 5G Ready

# Easy Operations with Single Image



IOS XE  
'Autonomous'  
mode

Accelerate SD-WAN

Single  
Image  
universalk9



Simplify Deployments



IOS XE  
SD-WAN  
'Controller'  
mode

Cloud-scale Applications

# Cisco Catalyst 8500 Platforms

## Powerful SD-WAN 1RU Platform with 100G, 40G ports



01 Improved Data Plane

02 Accelerated SD-WAN Services

03 High Speed Multicloud Access

04 Highly Scalable Control Plane

3rd Generation Quantum  
Flow Processor



Hardware  
Accelerated Services



Up to 8000 SD-WAN  
IPsec Tunnels



High Speed DIA, DCA  
100/40/10/1G Ports



# Cisco Catalyst 8500 Series Edge Platforms

## Highly Capable 1RU SD-WAN Headend

### Integrated Rich Services

NBAR2, NAT, Firewall, QoS, etc.  
Industry's Leading Service Edge Platforms

### Edge Intelligence

Compute  
Container based Apps



### Scale

Up to 8000 SD-WAN Tunnel Aggregation  
High Speed 100/40 Gigabit Ethernet Ports  
High Density 10/1 Gigabit Ethernet Ports

### Multi-layer Security

High Throughput MACsec and IPsec  
Trustworthy Solutions  
Umbrella SIG

## Highlights

All Ports  
Built-in

WAN  
MACsec

Third  
Generation  
QFP

Up to  
200Gbps  
CEF

5G  
Ready

## Manageability

vManage

DNA Center

Open APIs

Analytics

Built-in  
Port  
Flexibility

# Cisco Catalyst 8500L Edge Platform

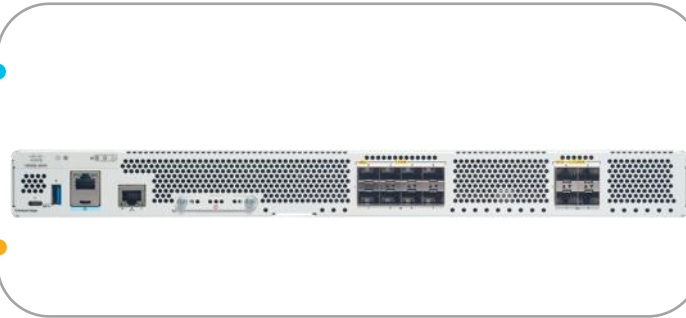
## Re-Imagined x86 based powerful SD-WAN Headend

### Multi-services Support

NBAR2, NAT, Firewall, QoS, etc.  
Industry's Leading Service Edge Platforms

### Edge Intelligence

Compute  
Container based Apps



### Scale

Up to 8000 SD-WAN Tunnel Aggregation  
High Density 10/1 Gigabit Ethernet Ports

### Multi-layer Security

High Throughput MACsec and IPSec  
Trustworthy Systems  
Umbrella SIG

## Connectivity

All Ports  
Built-in

WAN  
MACsec

x86  
Advanced  
Flow  
Forwarding

Up to 20  
Gbps CEF

5G Ready

## Manageability

vManage

DNA Center

Open APIs

Analytics



Core  
Allocation  
Flexibility

# Cisco Catalyst 8300 Series Edge Platforms

## Multi Gig SD-WAN branch with Accelerated Services



**5X** Data plane Performance



**4X** Services Performance



**Gigabit+** Cellular, 5G Ready



**SD-WAN** Voice Integration

SoC Architecture for  
Dynamic Core allocations



Hardware  
Accelerated Services



Up to 6000 SD-WAN  
IPsec Tunnels



High Speed Cloud Access  
With 10/1G Ports





# Cisco Catalyst 8300 Series Edge Platforms

## Foundation for the Secure Cloud Scale SD-WAN branch

### Integrated Rich Services

Voice Survivability, Forward Error Correction & Packet Duplication, TCP Optimization

### Edge Intelligence

Compute  
Container based Apps



### Scale

Up to 5x IPsec and IP CEF Performance  
Core Availability for 3-4x Services Performance

### Multi-layer Security

SSL Acceleration  
Application Firewall  
IPS/IDS, URL Filtering  
AMP, Threat Grid  
Umbrella SIG

## Connectivity

Higher  
WAN Port  
density

Default  
8G DRAM

10G w/  
MACsec

Pluggable  
NVMe  
Storage

5G Ready

## Manageability

vManage

DNA Center

Open APIs

Analytics

YES  
Modularity

# Cisco Catalyst 8200 Series Edge Platforms

## Foundation for the Secure Cloud Scale SD-WAN branch

### Integrated Rich Services

Voice Survivability, Forward Error Correction & Packet Duplication, TCP Optimization

### Edge Intelligence

Container based Apps



### Performance & Scale

Up to 2x IPSec and CEF Performance  
Core Availability for 2x Services Performance  
Up to 2x higher IPSEC tunnel Scale

### Multi-layer Security

SSL Acceleration  
Application Firewall  
IPS/IDS, URL Filtering  
AMP, Threat Grid  
Umbrella SIG

## Connectivity

Higher  
WAN Port  
density

Default  
8G DRAM

PIM  
Support

Pluggable  
NVMe  
Storage

5G Ready

## Manageability

vManage

DNA Center

Open APIs

Analytics

YES  
Modularity

# Cisco Catalyst 8200uCPE

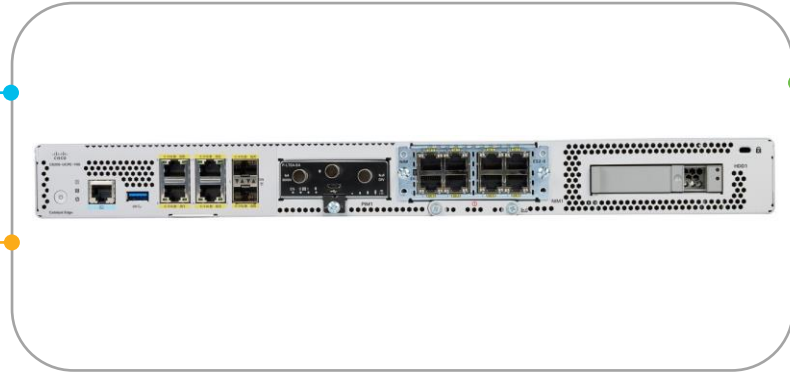
uCPE designed for Service Providers

## Rich Service Chain

Routing and security functions on one platform  
SD-WAN Routing, Security, WLC VNFs

## Performance Elasticity

Scale throughput according to branch requirements  
Up to 500 Mbps IPsec with QAT & 2 Gbps CEF



## Edge Intelligence

AI/ML Analytics  
IoT and Business Applications

## Compact and Secure

Cisco Trustworthy Solution  
Hardware Anchor Module  
Less than 12-inch depth

## Highlights

8 Core CPU  
Up to 4 VNFs

WAN/LAN  
Module  
Diversity

5G Ready

Higher WAN  
Port Density

Up to 4TB  
Storage

## Manageability

vManage

NSO

MSX

Analytics

# Catalyst 8300/8200 Edge Platforms Family – SoC



X86 Multi-core CPU



Hosted App1

Hosted App2

IPS

URL-F

AMP

UTD Engine

KVM – Hypervisor

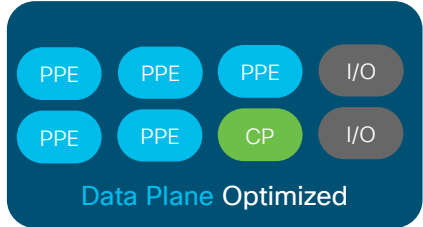
LXC Container



Quick Assist Technology (QAT)



Dynamic Allocation



- I/O Core
- Data Plane Core
- Control Plane Core
- Service Plane Core

Dynamic Core allocation – meet throughput and services demand

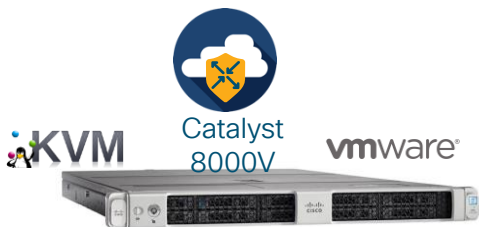
# Cisco Catalyst 8000V Edge Software

Versatile Network  
Connectivity Options

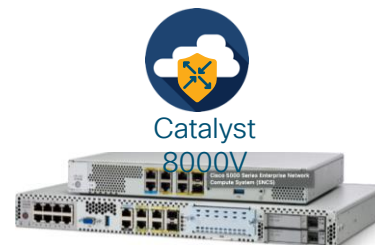
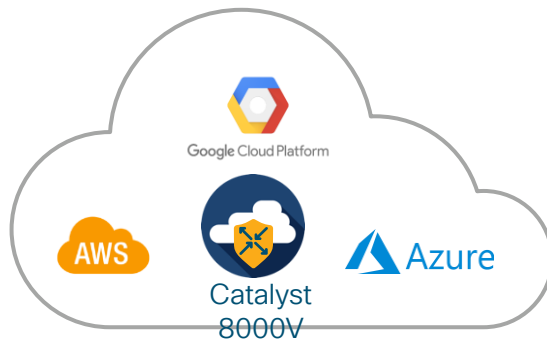
Seamless SD-WAN  
Extension in cloud

Infrastructure  
Agnostic

Service Richness

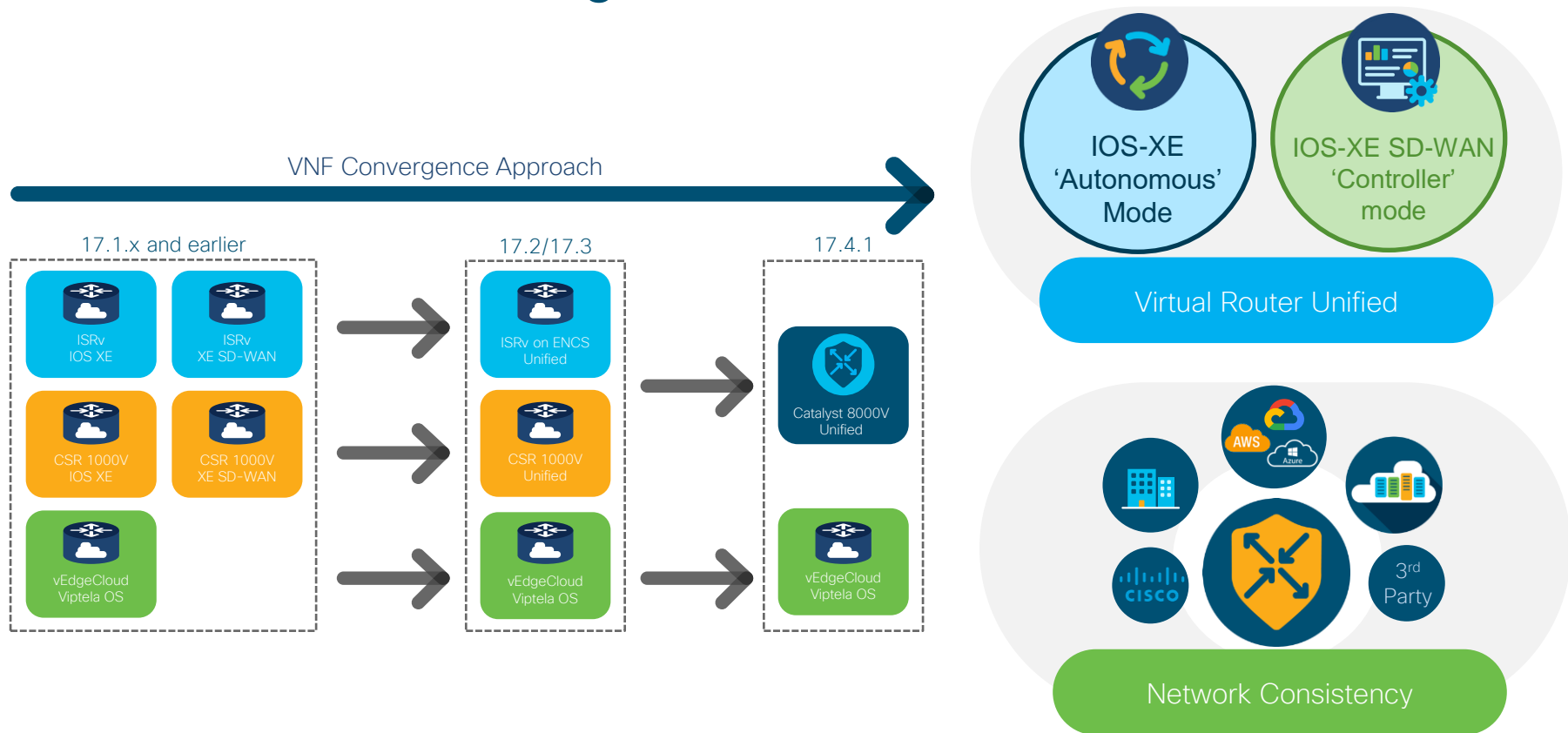


Hypervisor  
On x86 server



NFVIS  
on ENCS

# Virtual Router Convergence



# Cisco Catalyst 8000V Edge Software

## Enterprise-class networking and Security with flexibility of a x86 based VNF

### Multi-Services Support

Feature-rich IOS XE and XE-SD-WAN software  
Supported features such as NAT, Firewall, NBAR  
QoS, etc.  
Runs on any x86 VM platform

### Cloud Integration

Extends connectivity, visibility, security into public  
and private clouds  
Auto-Scaling capability  
Integration with Azure vWAN and AWS TGW  
Supports wide variety of cloud instances



### Performance Elasticity

CPU Hypervisors: 1 - 8 vCPU  
Cloud Providers: 1- 16 vCPUs  
Memory Scale: 4 - 16Gb

### Multi-Layer Security

Secure object storage  
High Throughput IPsec  
IPS/IDS, URLF, AMP&TG, TLS Proxy

## Highlights

Up to 10  
Gbps IPsec in  
cloud

ENCS  
NIM  
support

TGW and  
vWAN  
integration

DPDK  
IO

SD-WAN  
in AWS,  
Azure,  
and GCP

## Manageability

vManage

Multi-tenant

Open APIs

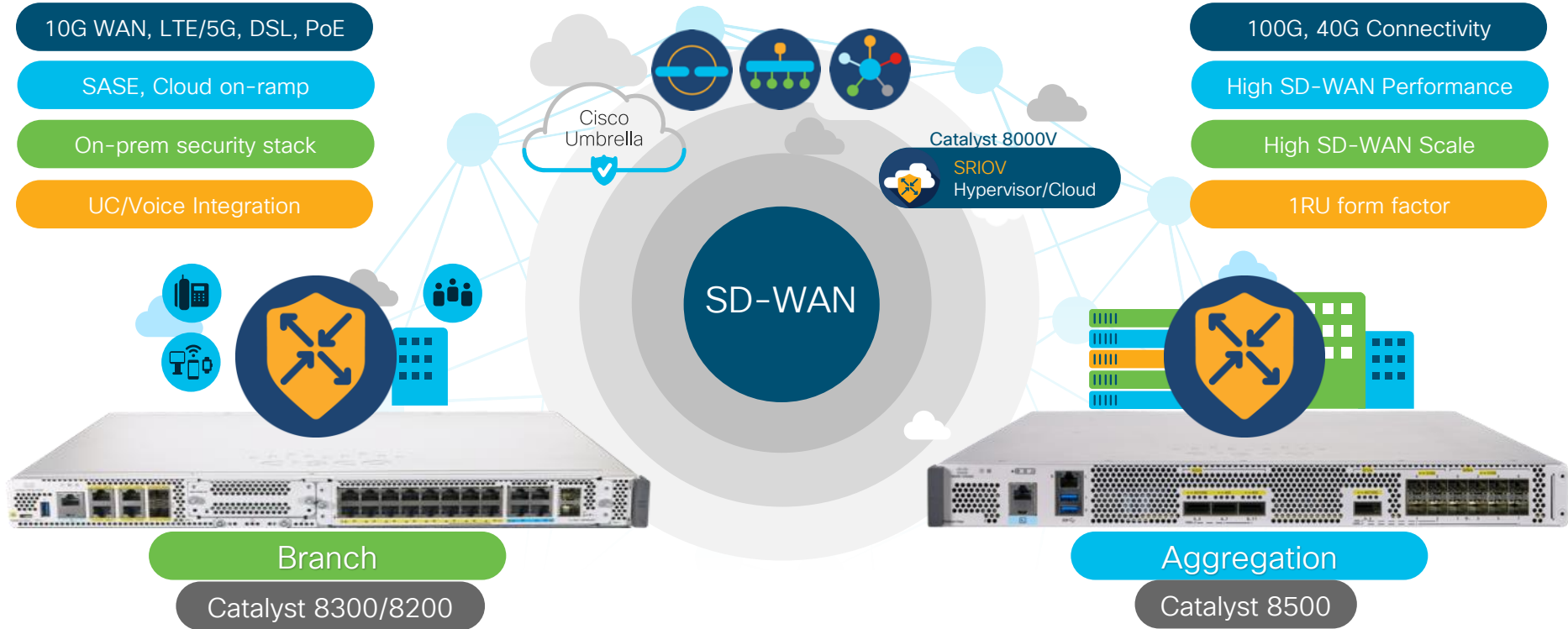
Analytics

Catalyst 8000V



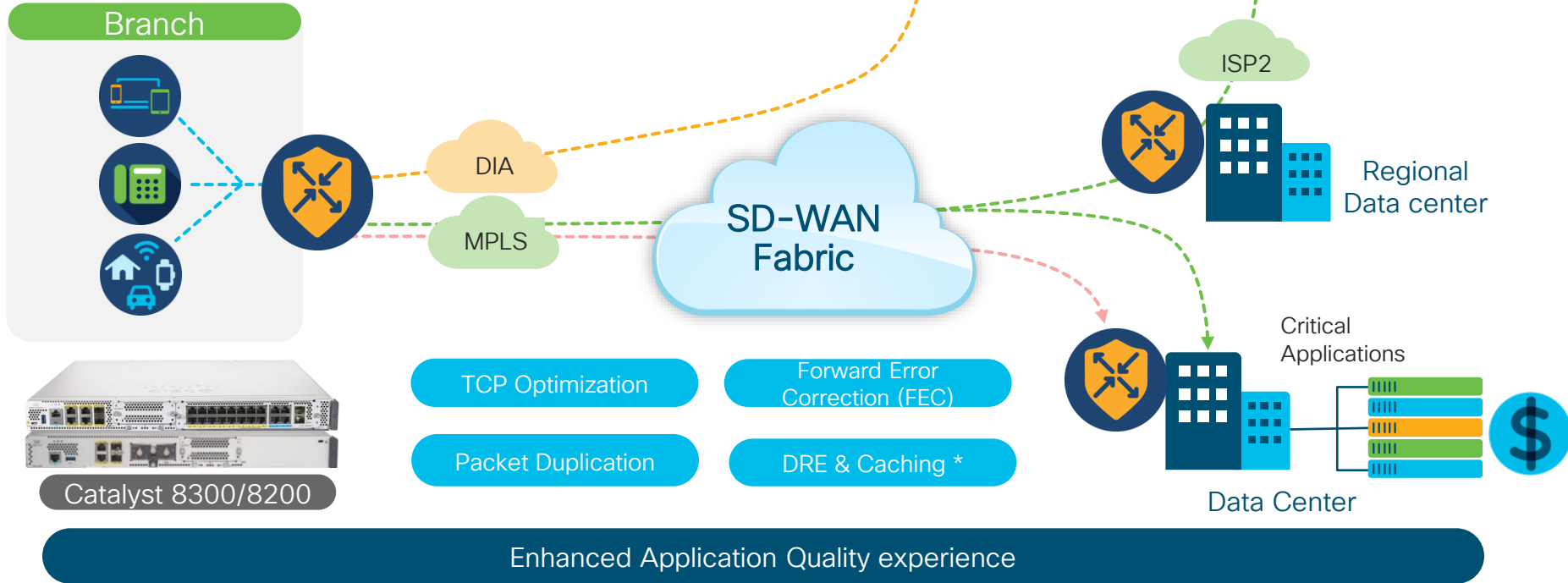
Virtual Switch/SRIOV  
Hypervisor/Cloud

# Catalyst 8000 - SD-WAN Hub, Branch and Cloud



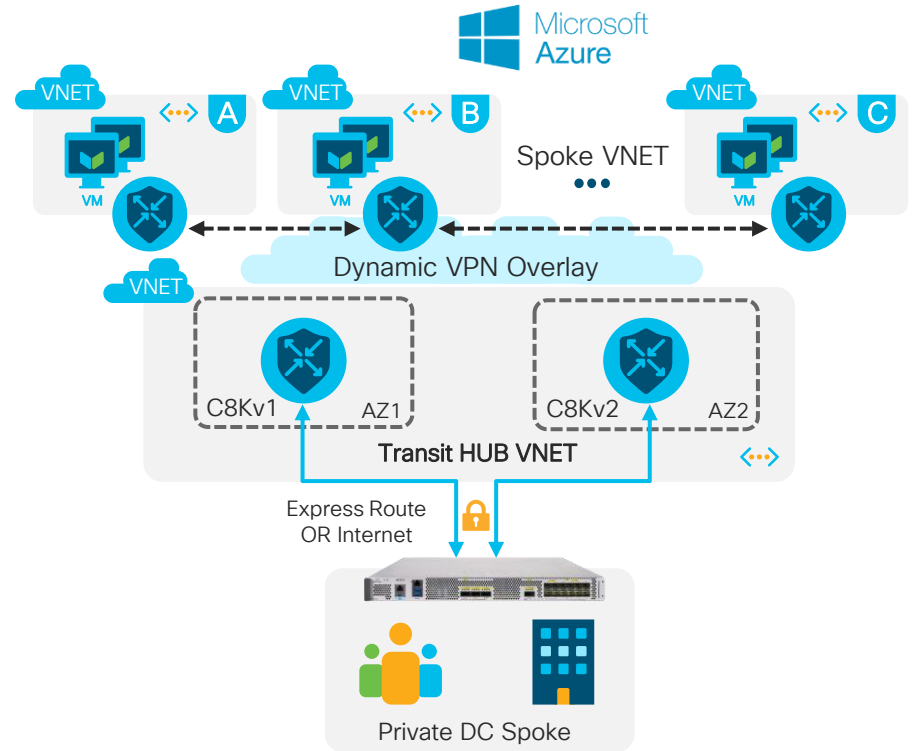
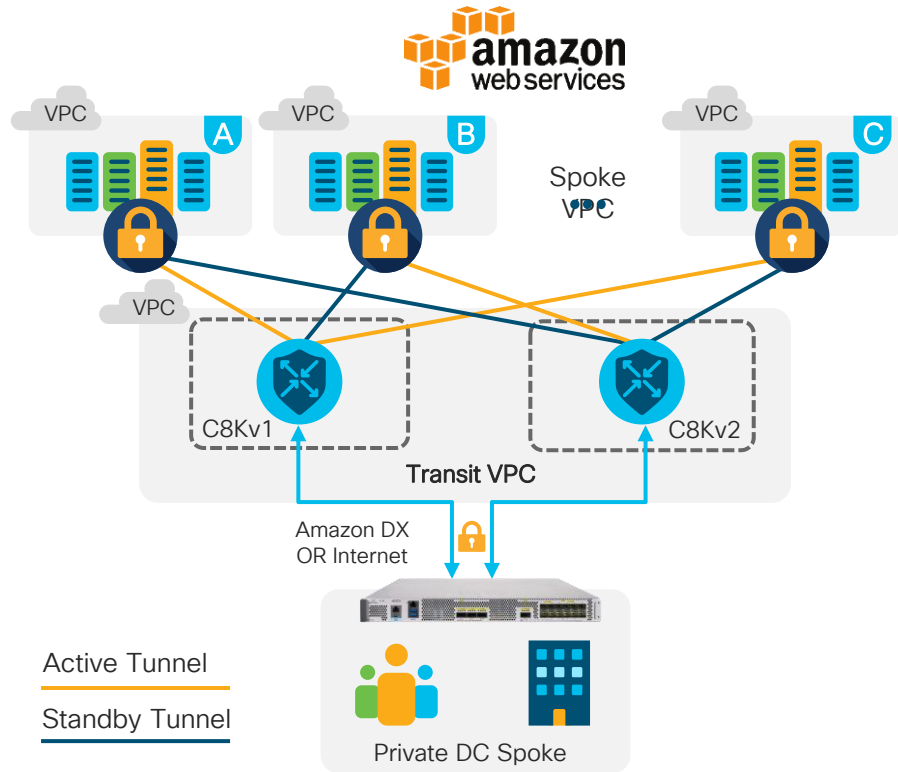


# AppQoE with SD-WAN



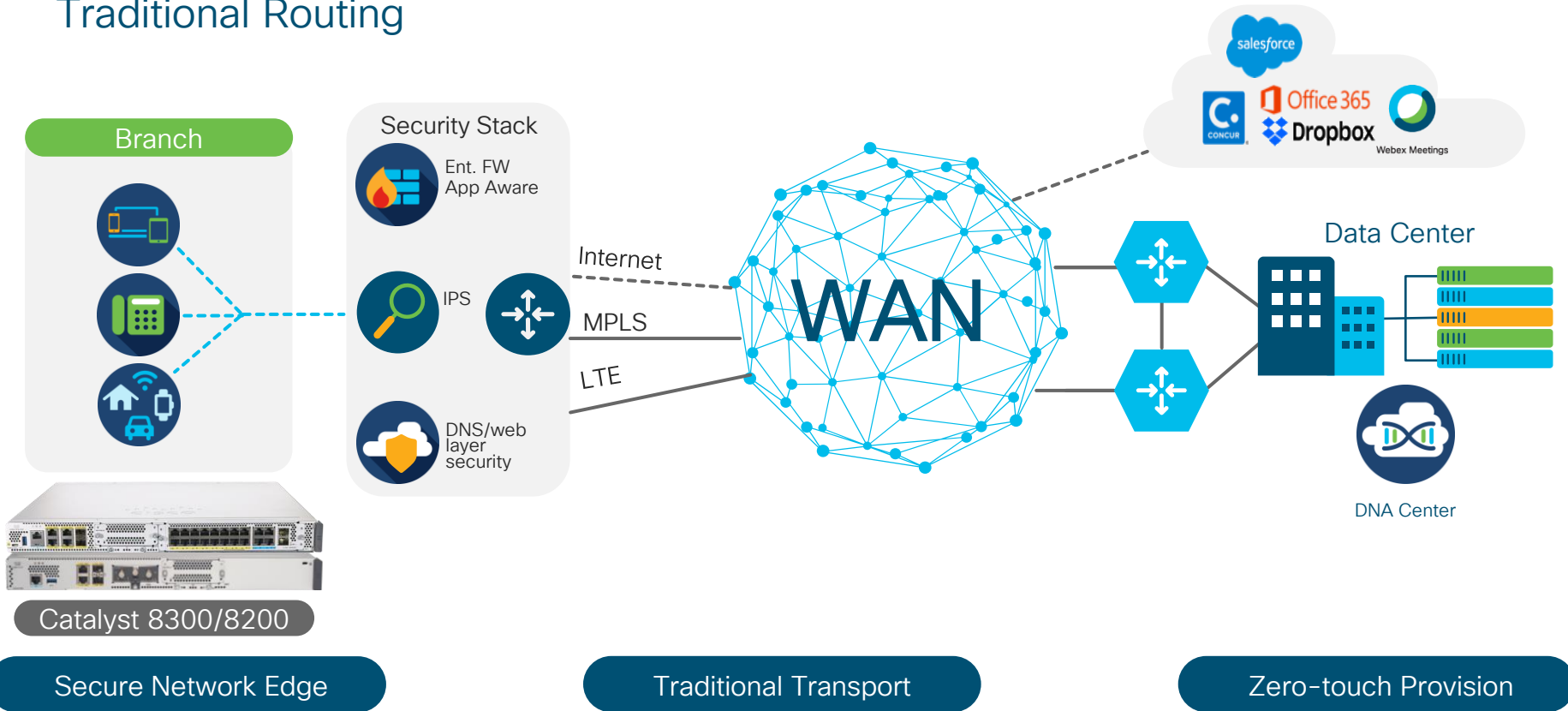
# Public Cloud Applications

## AWS Transit VPC, Azure Transit VNET

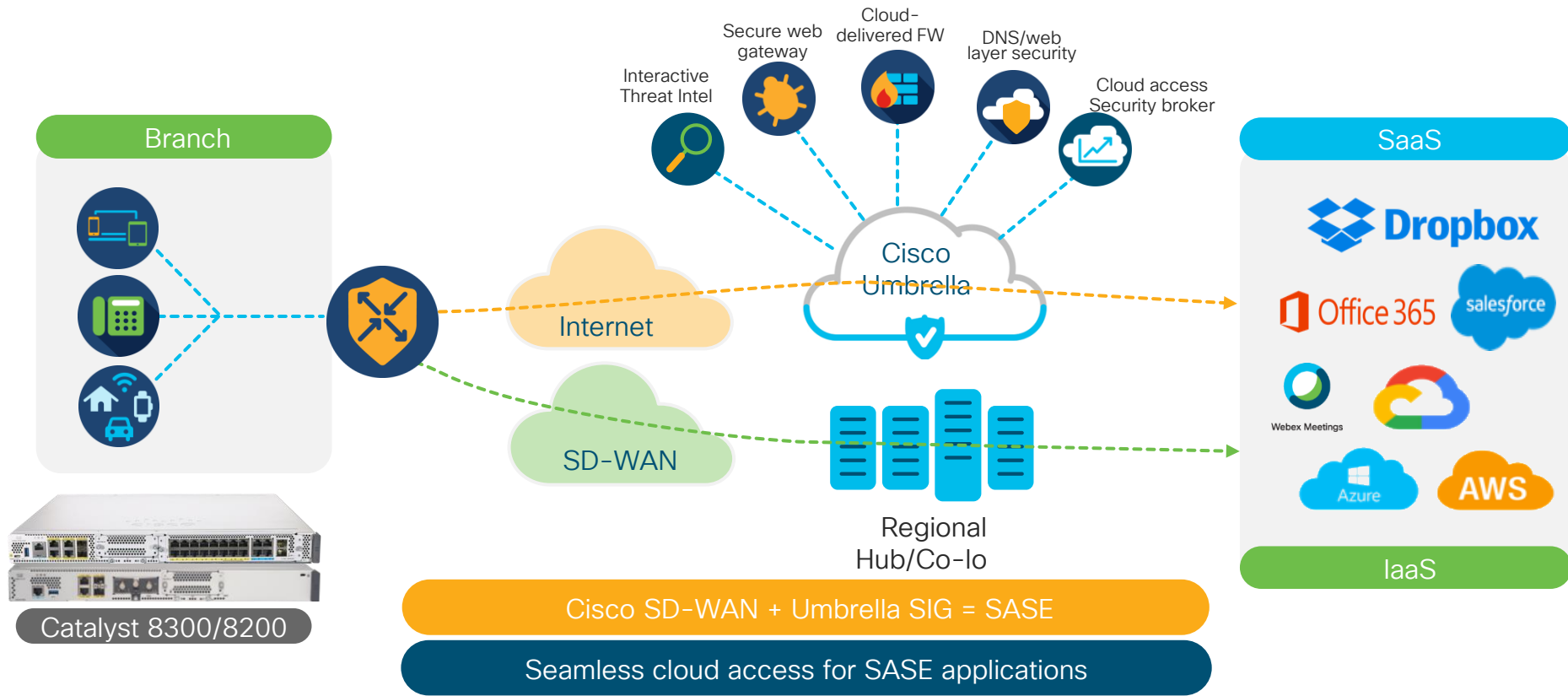


# Enterprise Branch Office

## Traditional Routing



# SASE Cloud Adoption with SD-WAN



# Key Takeaways



- SASE - a modern approach to building secure networks in multicloud world
- Cisco SASE solution delivers superior connectivity with complete protection
- New Catalyst 8000 Platform Optimized for SASE and Cloud-scale SD-WAN solutions