



Cisco Secure Remote Worker

Securing users wherever they work, on any device

Milan Habrcetl a Jiří Tesař

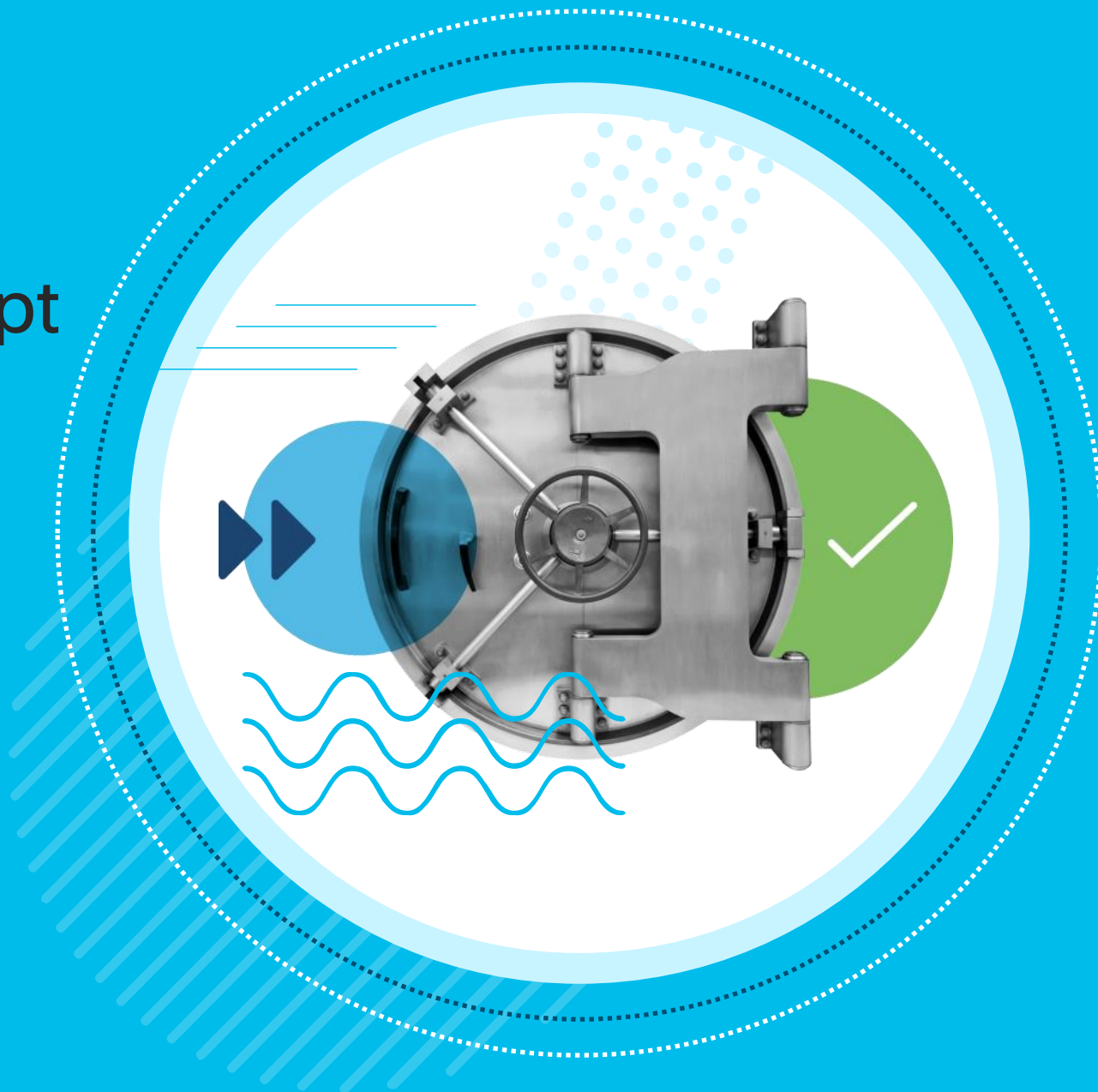
20. 4. 2021, TechDays

Agenda

- Remote Workers concept
- Čas na kávu
- Demo



Více informací o seminářích
TechDay , nahrávky a
presentace najdete zde:



The trend to a more distributed workforce continues to grow



In the U.S.,
56% of all
employees have a
job where at least
some of what they
do could be done
remotely.

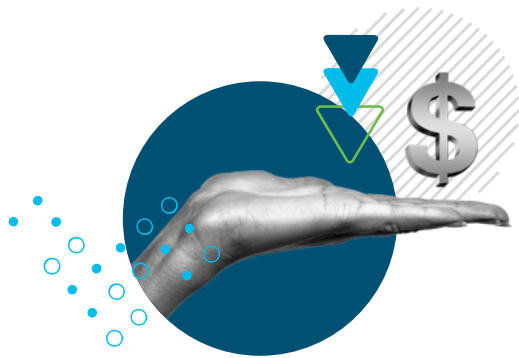
43%

2019
Work from
home with
some frequency

83%

2021
Predicted
increase in
WFH frequency

With benefits for both employers and employees...



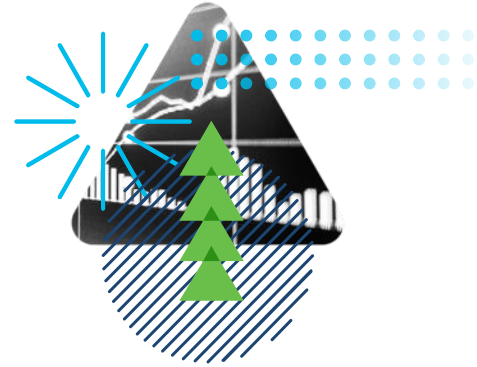
Lower
overhead costs

Employers save
\$11K/year
per employee



Lower
employee costs

Workers save \$4K/
year on commuting,
parking, food



Maintained
business continuity

Workers maintain
productivity, saving
employers \$400/day



Higher productivity
and efficiency

Workers save 30
days/year in time
spent commuting

As companies consider next steps, remote workers unknowingly create more risk

Use of more SaaS-based and unsanctioned apps

Bypassing the VPN to gain corporate access

No awareness of how device posture could create risk

Low awareness of how behavior exposes company to risk

New and unrestricted devices accessing company data

Working on consumer Wi-Fi without knowledge of risk

Regardless of what business you're in, your IT and Security teams need to:

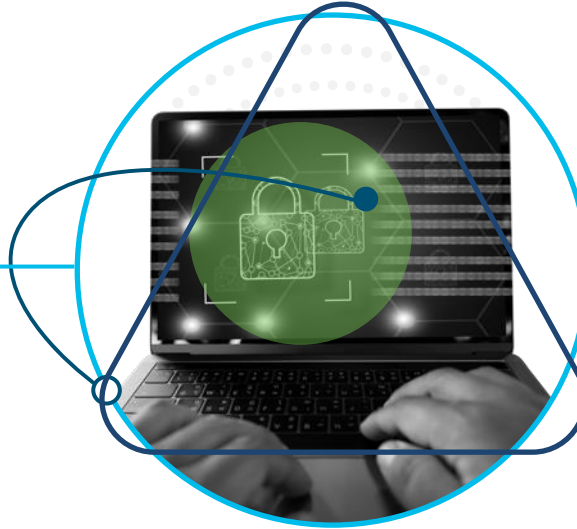
- Verify identity and establish trust
- Enable work from any connection on any device
- Secure access to company apps and data
- Protect data from threats
- Simplify security with a single, integrated platform



We have a set of integrated solutions to secure your remote workers



Verify
user identity



Enable
secure access



Defend against
threats

Cisco Secure Remote Worker



That secures users wherever they work, on any device



...backed by the reliability and support of a world leader in technology

Cloud-delivered simplicity

Scalable collaboration software

Open and integrated platform

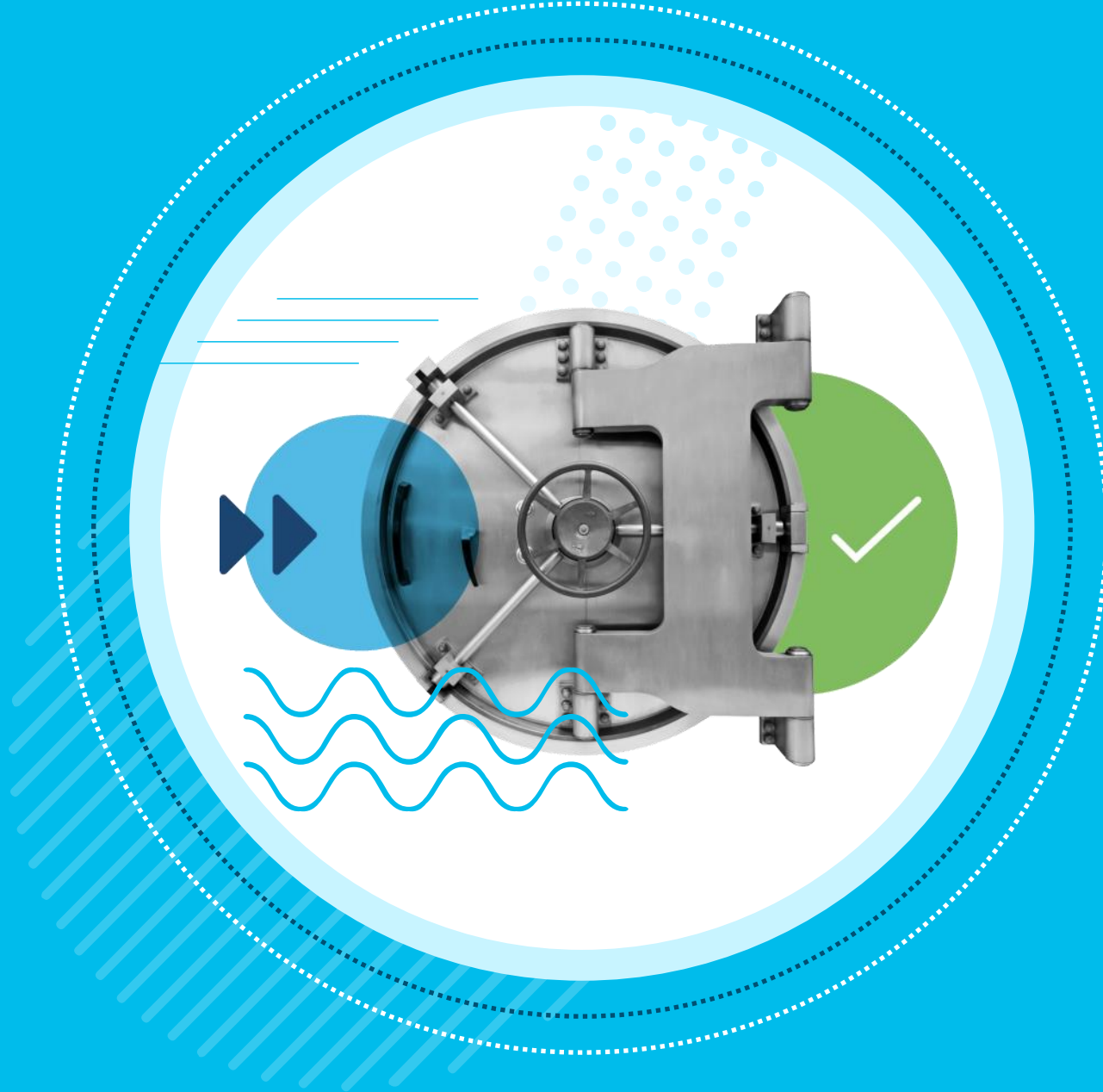
Platform level management, response, and analytics

Deep network integration

Products and services for every business

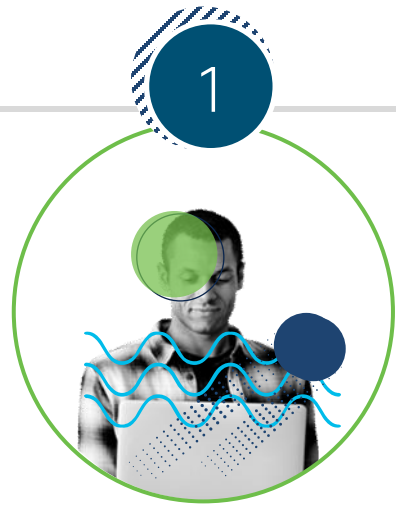


Cisco Duo



Verify the identity of all users before granting access to company-approved applications

World's easiest and most secure MFA



Empower remote users to self-enroll on demand



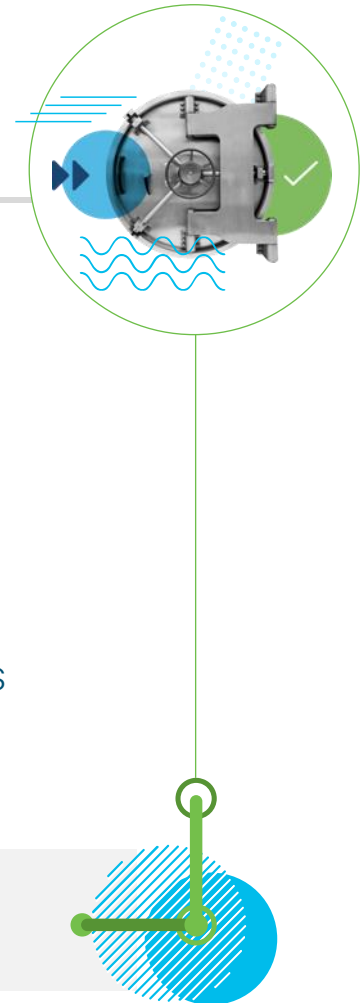
Add a layer of security with just a few clicks



Provide MFA options for remote workers based on their needs



Facilitate user access while minimizing shadow IT



...with zero trust across all apps, users and devices

Complete Visibility

Gain complete visibility into all laptops and mobile devices using Duo's native device visibility.



Security Posture Check

Easily identify device security posture and managed (or not) based on enrollment in MDMs/EMMs.



Continuous Inspection

Continuously monitor if devices are infected with malware by using solutions such as Secure Endpoint to prevent them from reaching sensitive apps.



Cisco AnyConnect

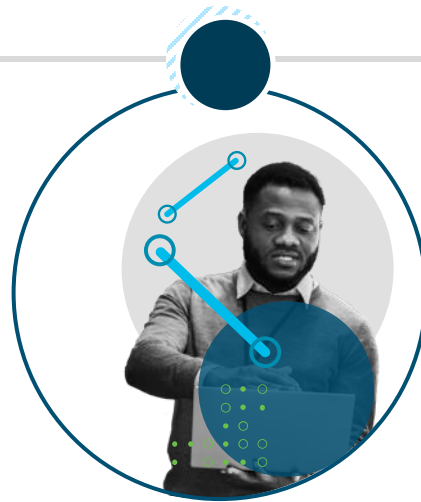


Enable secure access to your network for any user, from any device, at any time, in any location

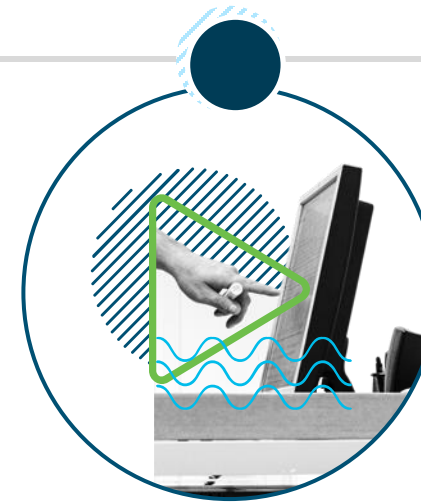
Risk-based access control predicated on security and trust



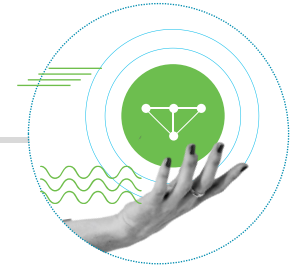
Quickly extend access to remote workers



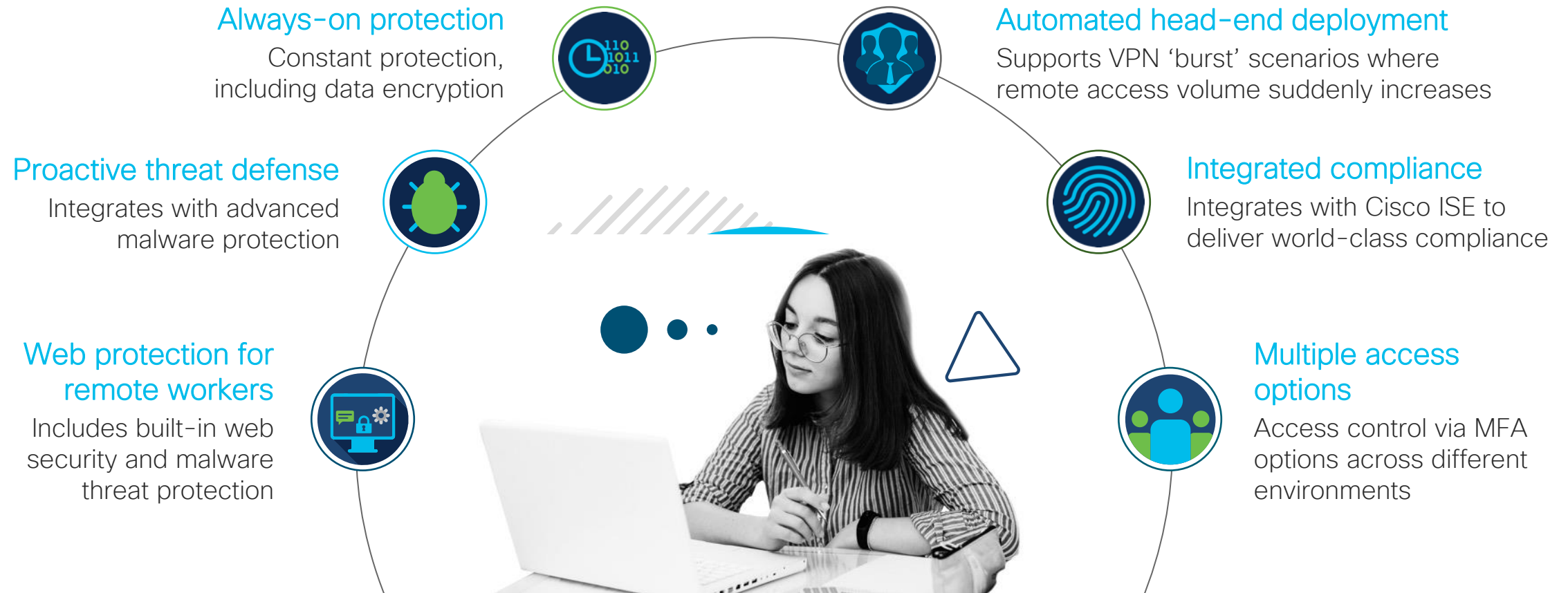
Gain visibility and control over who's accessing the network and on what devices



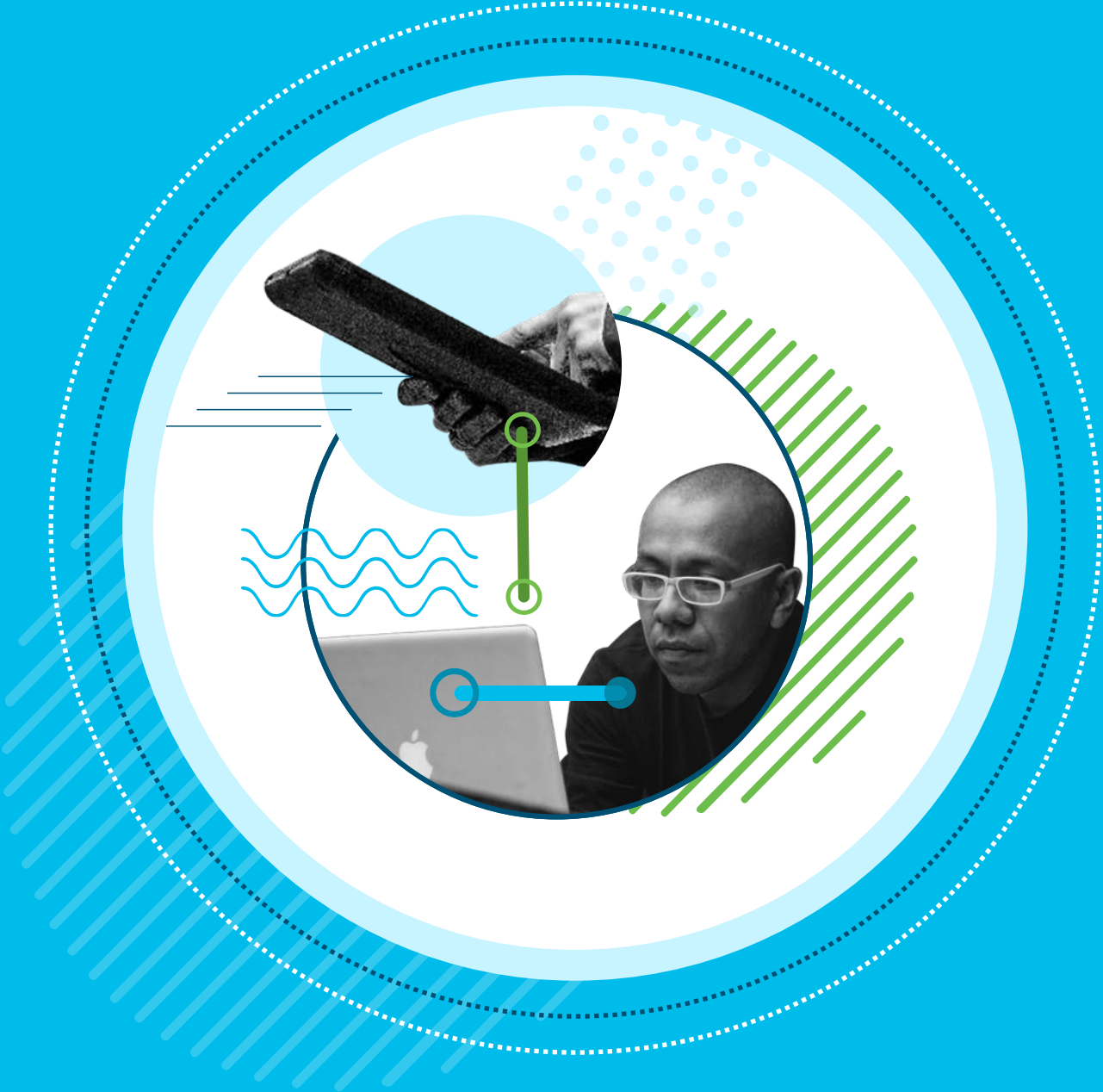
Perform continuous endpoint posture checks



Get more benefits than a traditional VPN to secure your remote workers



Cisco Umbrella



Hold the first line of defense against threats on the internet wherever users go

Flexible, fast and effective cloud-based security



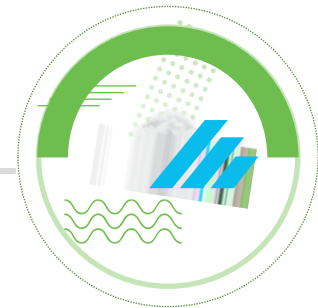
Protect remote workers against malware that uses DNS



Detect compromised endpoints through persistent DNS monitoring



Block threats before they compromise you



Umbrella expands beyond DNS Security

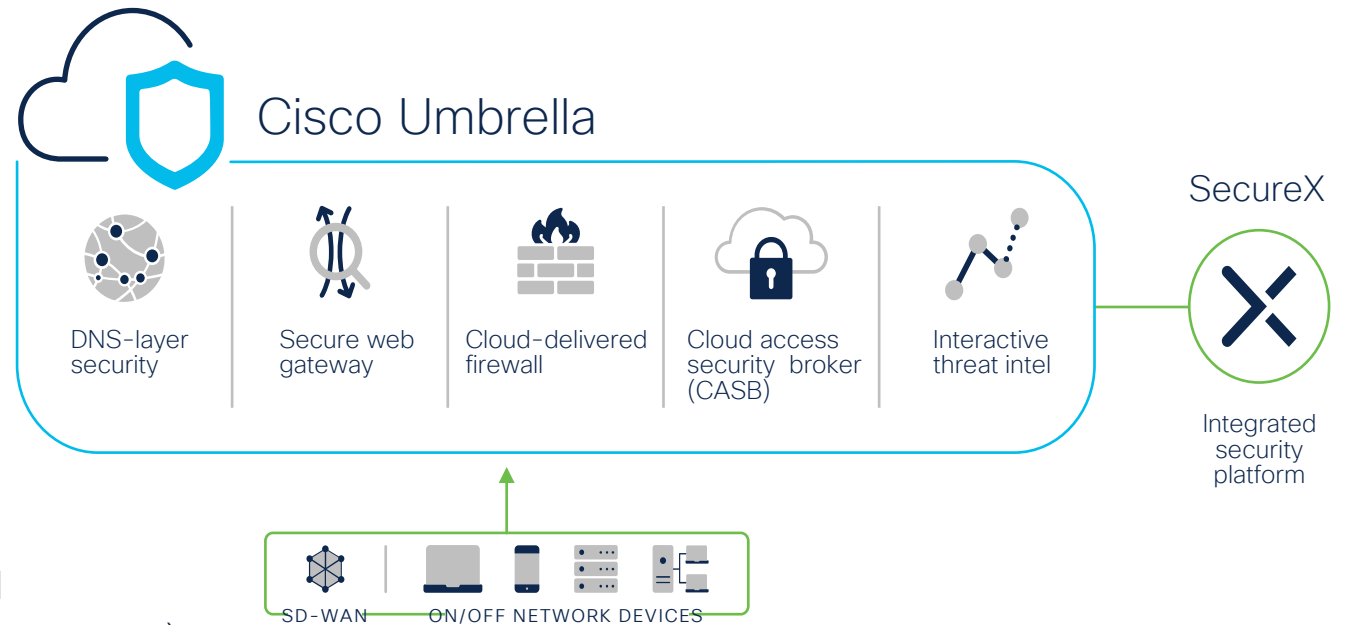
In the last year, we've added a lot of new functionality to provide stronger protection, deeper web and app controls, and more integrations. This functionality is available in the Umbrella SIG Essentials package.

Umbrella now offers the following capabilities:

- DNS-layer security
- Secure web gateway (full proxy)
- Cloud-delivered firewall
- CASB functionality
- Interactive threat intelligence
- Multiple traffic redirection methods
- SD-WAN integration

Use cases:

- Secure branch office direct internet access (DIA)
- Secure networks that use or plan to use SD-WAN
- Secure remote worker via AnyConnect client (DNS & SWG)



Cisco Secure Endpoint



Maintain the last line of defense through Secure Endpoint

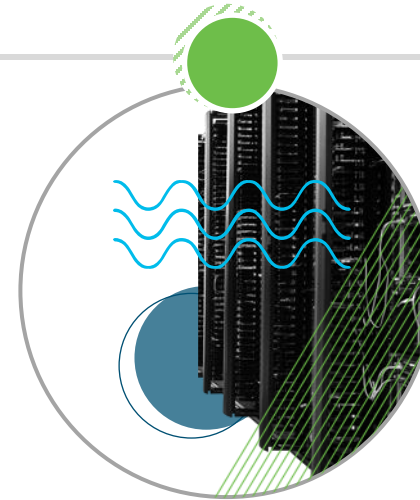
Complete threat protection across all control points



Proactive protection to block even the most advanced threats




Detect and respond to threats continuously with advanced EDR




Leverage global threat intelligence via Cisco Talos



It's time to reimagine endpoint security

 Multi-factor Authentication
Risk-based Access Control
Posture
Virtual Private Network



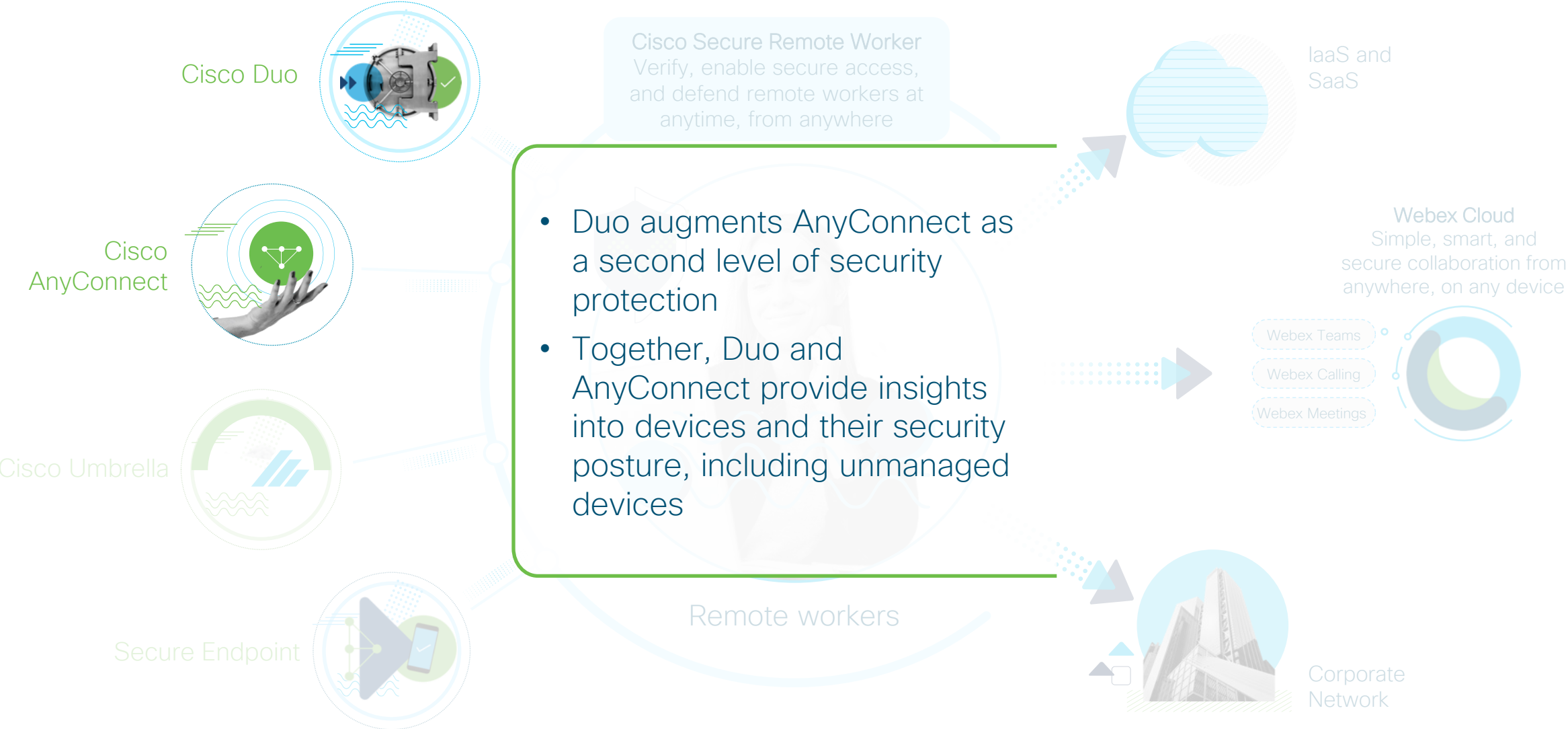
 Machine Learning
Next Gen Antivirus
Fileless Malware | Ransomware Protection
Internet Protection

 Broadest XDR
Advanced EDR
Threat Hunting
Attack Surface Reduction

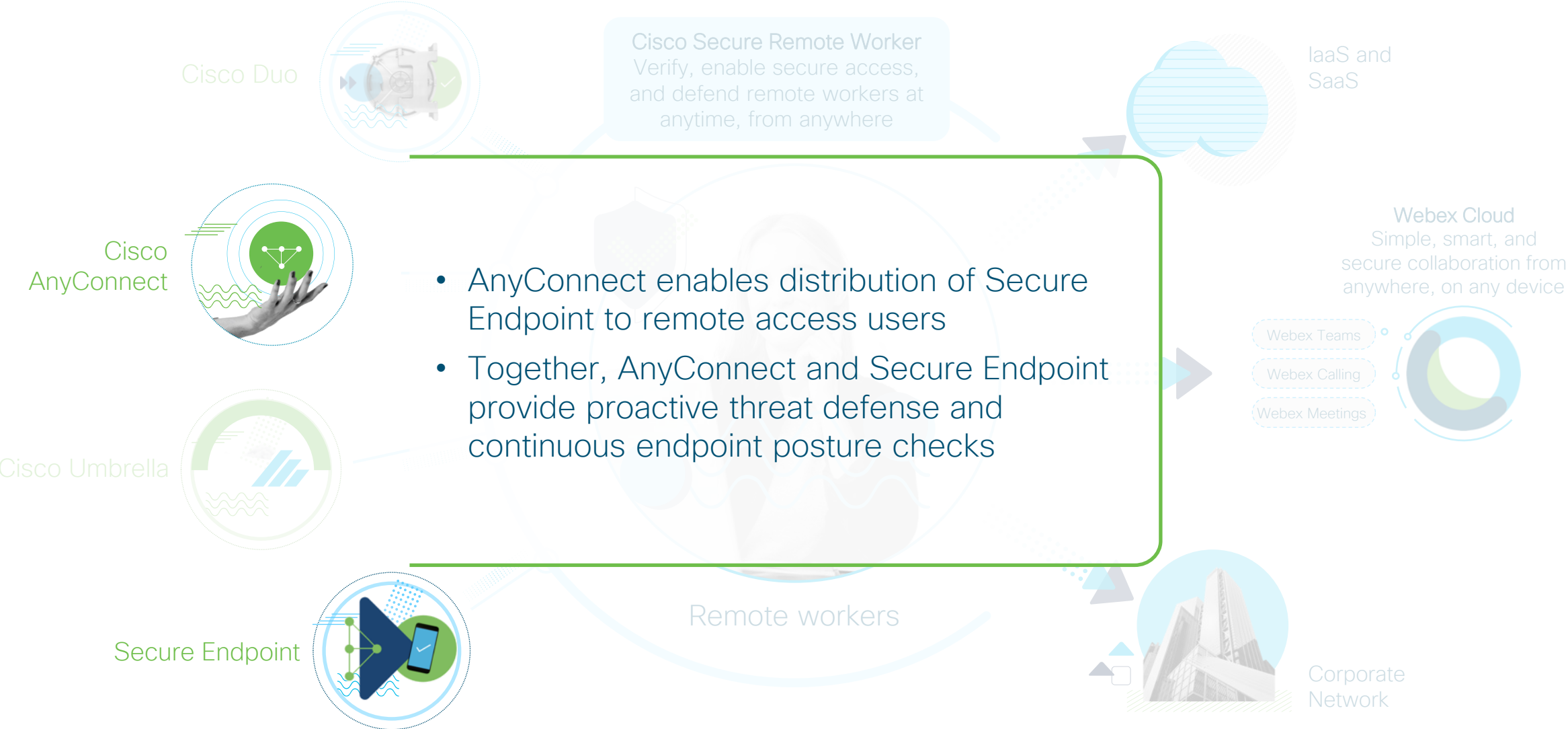
Cisco's integrated design protects users everywhere



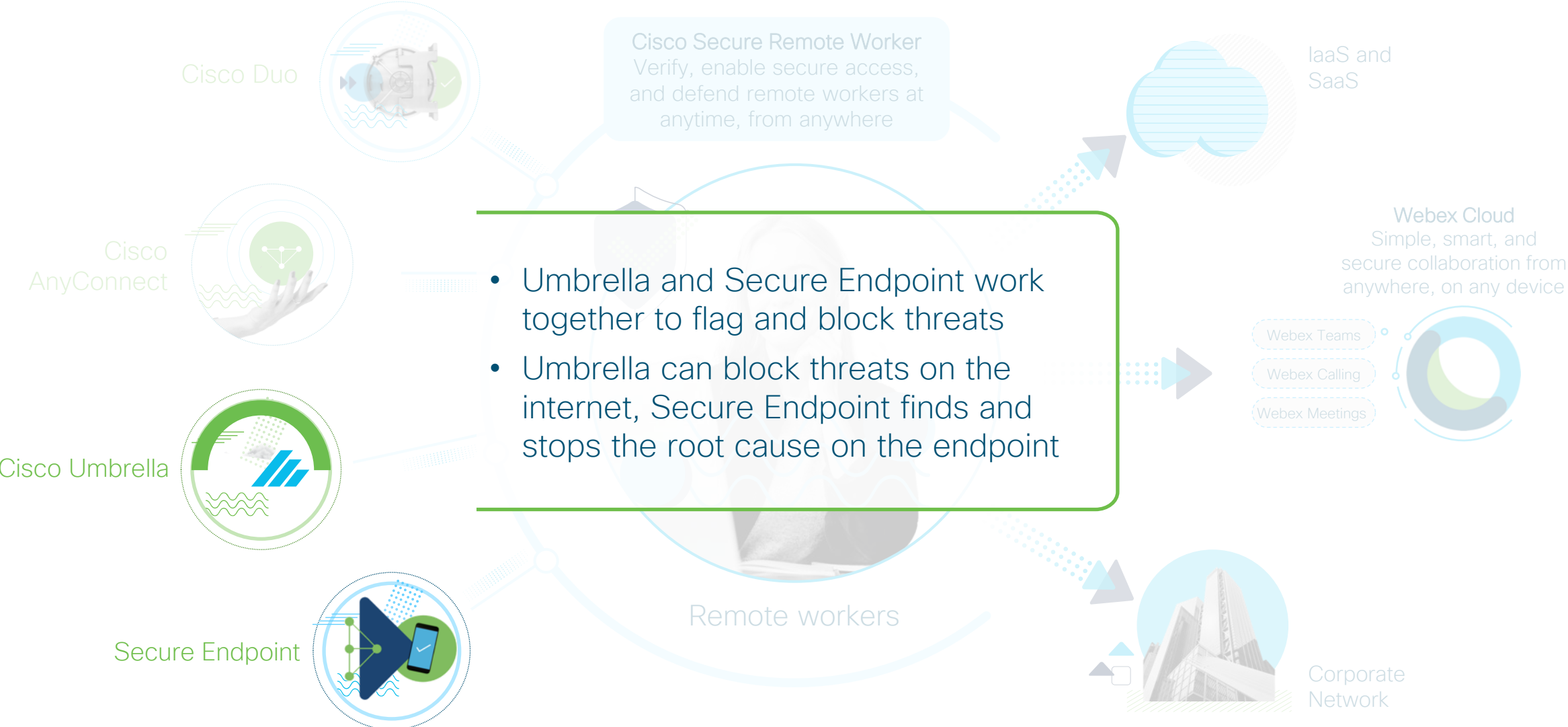
Cisco's integrated design protects users everywhere



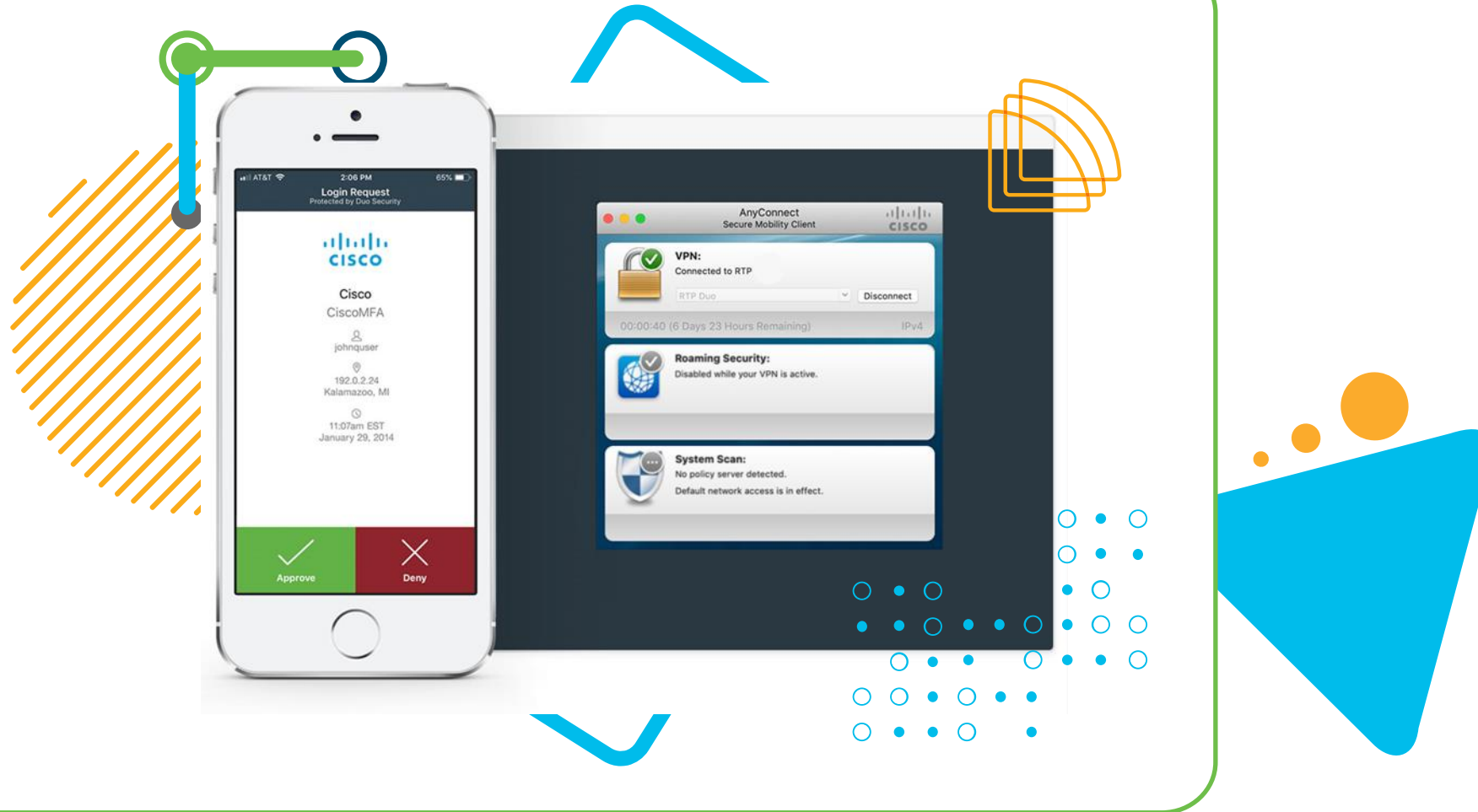
Cisco's integrated design protects users everywhere



Cisco's integrated design protects users everywhere



With solutions that work together...



Co takové řešení stojí?

Příklad: 400 uživatelů, 5 let TCO*

- Secure Firewall FPR1140 – 400 VPN spojení, 2ks
- AnyConnect plus
- Secure Endpoint (AMP4E)
- DUO MFA
- Umbrella DNS Essential

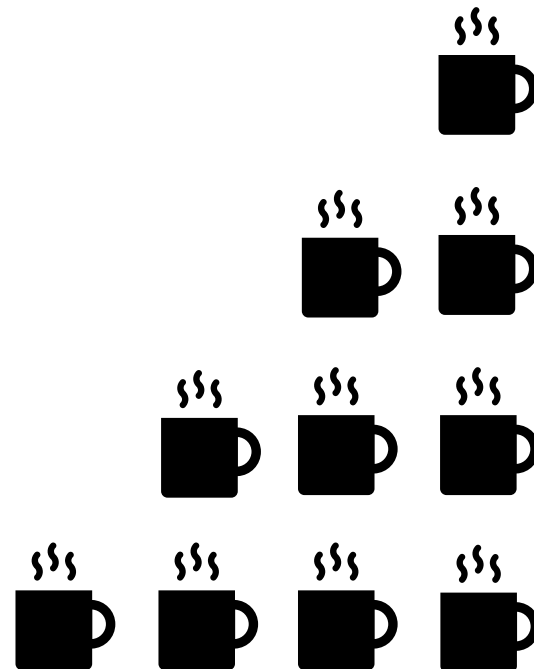
Celkem za uživatele měsíčně: **4,95 USD**

***Kvalifikuje se pro EA Choice kde je možná sleva až 65% z GPL + možnost konzumace až 20% navíc (480 users)**

The screenshot displays a list of services under the heading "Hardware, Software and Services". Each item includes a checkbox, a plus icon, a version number, a service ID, and a description. The services listed are:

- 1.0 FPR1140-ASA-K9** (Cisco Firepower 1140 ASA Appliance, 1U) with a "SA" tag. Valid as of 23-Mar-2021 09:24:44 PDT. Includes links for "Edit Options" and "Edit Service/Subscription".
- 2.0 L-AC-PLS-LIC=** (Cisco AnyConnect Plus Term License, Total Authorized Users). Valid as of 23-Mar-2021 09:25:33 PDT. Includes links for "Edit Service/Subscription", "Validate", and "Recommender".
- 3.0 AMP4E-SEC-SUB** (Cisco AMP for Endpoints XaaS Subscription). Valid as of 23-Mar-2021 12:13:13 PDT. Includes a table for "Requested Start Date" (26-Mar-2021) and "Request Initial Term" (60 Months), along with links for "Edit Options", "Validate", and "Recommender".
- 4.0 UMB-SEC-SUB** (Cisco Umbrella Security Subscription). Valid as of 23-Mar-2021 12:13:34 PDT. Includes a table for "Requested Start Date" (26-Mar-2021) and "Request Initial Term" (60 Months), along with links for "Edit Options", "Validate", and "Recommender".
- 5.0 DUO-SUB** (Cisco Duo subscription). Valid as of 23-Mar-2021 12:13:52 PDT. Includes a table for "Requested Start Date" (26-Mar-2021) and "Request Initial Term" (60 Months).

Kolik šáleků kávy
vypijete denně v
práci?



Žádný

Jeden

Dva

Tři

Více než
tři

1 Caffè Mocha to go měsíčně!!!



Kurz CNB USD – CZK k 21.3.2021

dolar

1

USD

21,975

Příklad: 400 uživatelů, 5 let TC

- Secure Firewall FPR1140 – 400 VPN spoje 2ks
- AnyConnect plus
- Secure Endpoint (AMP4E)
- DUO MFA
- Umbrella DNS Essential

Celkem za uživatele měsíčně: **4,95 USD**

Celkem za uživatele měsíčně: 109 Kč

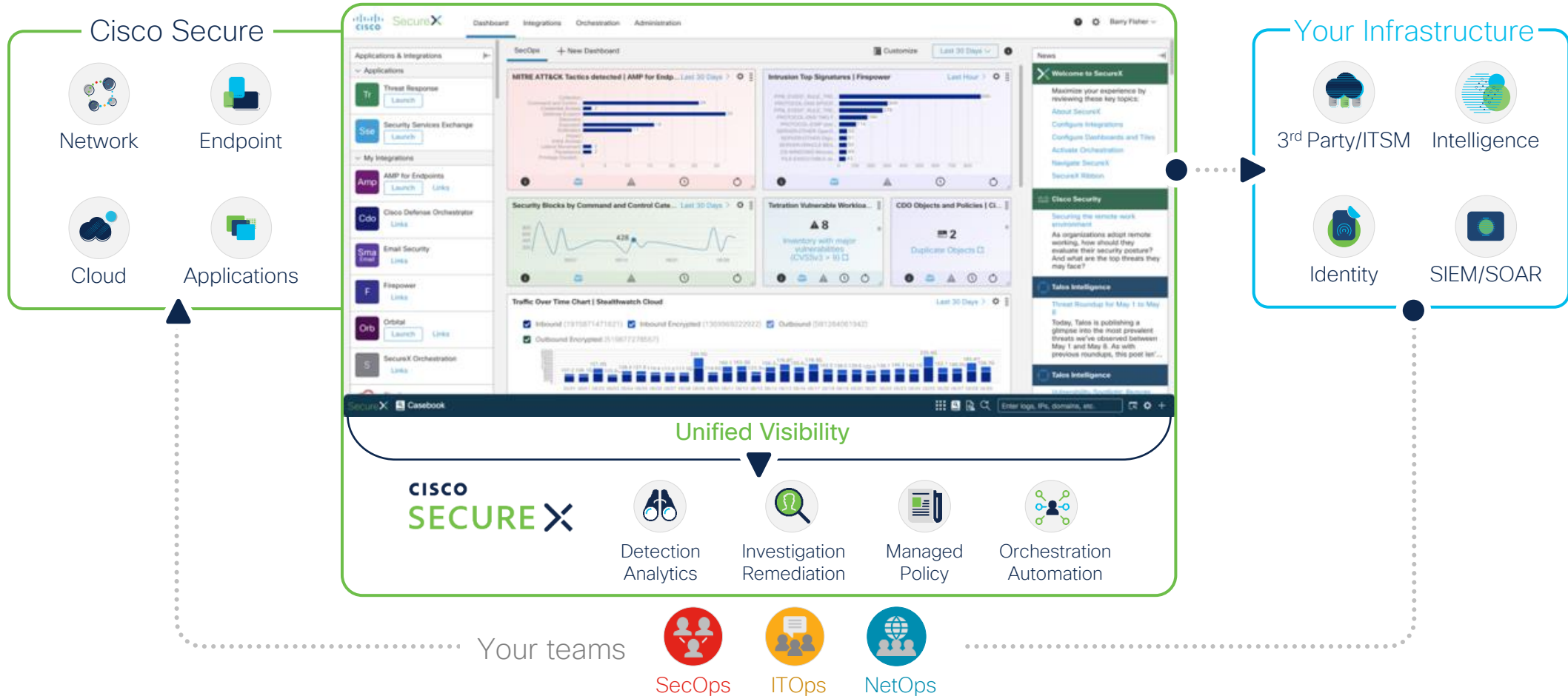


The image shows a Starbucks menu for Espresso drinks. At the top, there are two coffee cup icons and the word "Espresso" in green. Below this, the menu lists various coffee drinks with their prices in three columns: Tall (354 ml), Grande (473 ml), and Venti™ (592 ml). The drinks listed are Caffè Latte, Cappuccino, Caffè Americano, Vanilla Latte, Caramel Macchiato, and Caffè Mocha.

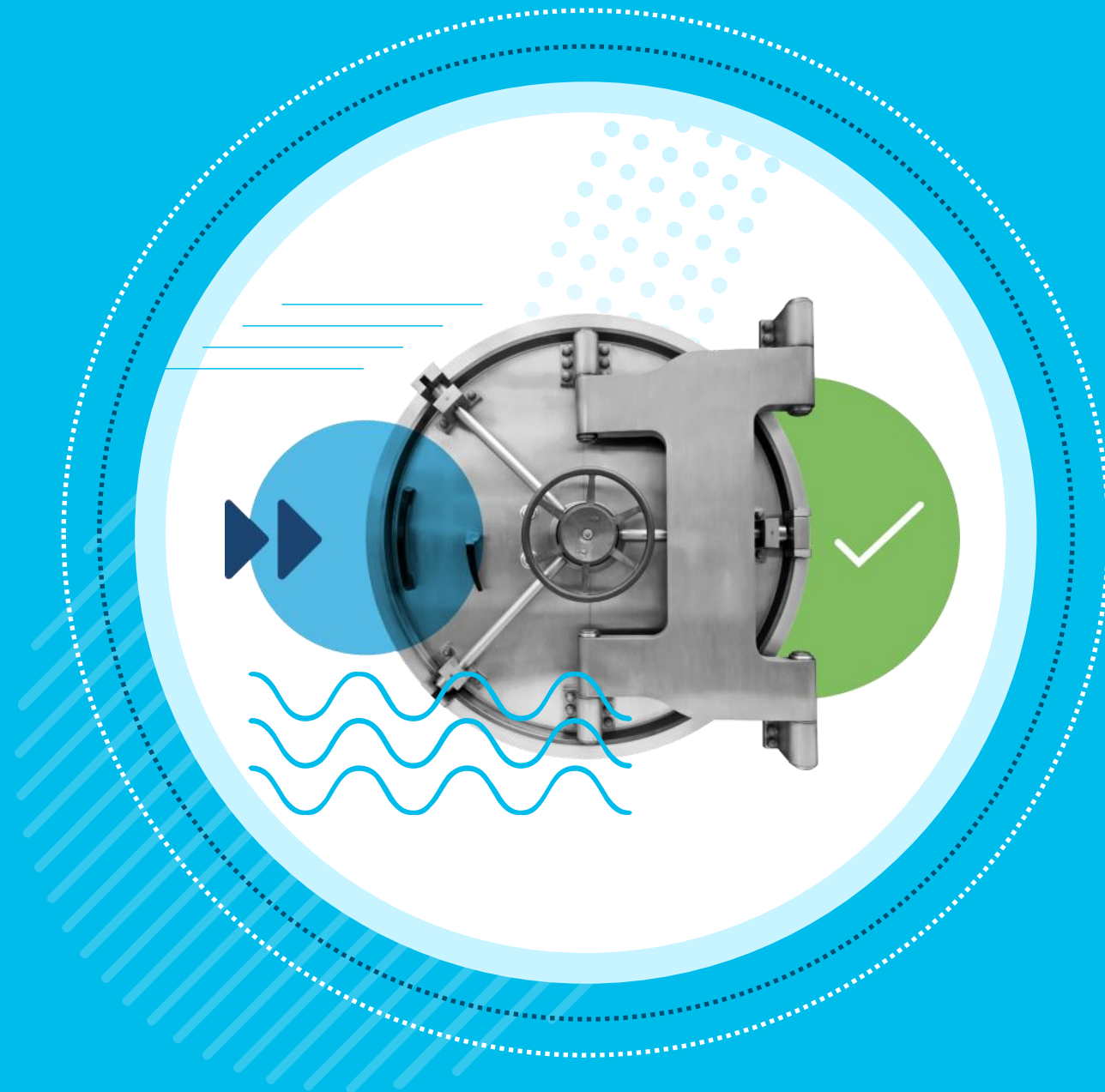
Skvělé horké i ledové	Tall 354 ml	Grande 473 ml	Venti™ 592 ml
Caffè Latte	79	89	99
Cappuccino	79	89	99
Caffè Americano	69	79	89
Vanilla Latte	99	109	119
Caramel Macchiato	109	119	129
Caffè Mocha	109	119	129

A jako bonus ke každé kávě SecureX zdarma!

A cloud-native, **built-in platform** experience within our portfolio



DEMO





THANK YOU